

PANDA TOOLS

PANDA
OUR QUALITY
YOUR TRUST

PRODUCTS LIST

德州攀达机床工具有限公司
Dezhou Panda Machine Tools Co., LTD

不断创新 不断突破

Constant innovation constantly breakthroughs



Enterprise introduction

企业简介

德州攀达机床工具有限公司专业生产数控刀柄、弹性筒夹、螺帽、拉钉、非标刀具等产品，公司创建于 2015 年 2 月，位于山东省德州市平原县经济开发区。

公司拥有多名高素质的管理和技术人员（其中高级工程师 1 名，工程师 1 名）。先进的加工设备、精密的检测设备、完善的加工工艺、专业的制造技术和严格的现场管理。

本公司锐意进取，始终坚持质量第一，用户至上，信誉为本的宗旨。以打造数控刀具类产品中国知名品牌为目标，不断实现自我发展、自我完善、自我超越，为创造一流的企业不懈努力。

企业理念：专业专注、开拓创新、诚信守道、追求卓越

企业使命：进无止境，让每一块原材料发挥最大的价值

企业愿景：与时俱进，永续经营，成长为具有全球竞争力的数控刀具品牌

价值观：以品质取得信任、以品牌提升价值

公司经营范围：数控刀柄（JIS-B6339 标准、DIN69871 标准、ANSI/AMSE B5.50 标准、DIN69893 标准、雕铣机用刀柄等）；弹性筒夹（ER 筒夹、SK 高速筒夹、后拉式筒夹）；拉钉；螺帽等等。

公司总经理李红携全体员工诚邀国内外客户的加盟与合作，共创辉煌事业，共绘绚丽人生。

Dezhou Panda Machine Tools Co., Ltd founded in Feb.2 ,2015 ,Ping Yuan Shandong China , is a professional manufacture of CNC toolholders , collets , nuts , pull studs , and all sorts of Non-standard cutting tools etc.

We have a number of high-quality management and technical personnel (1 Senior Engineer and 1 Engineer). The company has all kinds of advanced processing equipment, precision testing equipment , Perfect processing technology , professional manufacturing technology and Strict site management .

Our plant has always been adhering to the principles of quality first, customers supreme and reputation fundament. The goal is to build a famous brand of CNC tool products in China, self-development, self-improvement, self-transcendence, To create a first-class enterprise unremitting efforts.

Company philosophy: Professional focused、Exploration and innovation、Integrity management、Pursuit of Excellence

Corporate Mission: More improvement , each of raw material will bring out the greatest value

Corporate Vision: advance with times, Sustainable Operation and Development ,Grow into a global competitive CNC tool brand.

Value system: Gain trust with quality and enhance value with brand

Business Scope:CNC toolholders (JIS-B6339 standard , DIN69871 Standard, ANSI/AMSE B5.50 Standard, DIN69893 Standard, tool holders of engraving and milling machine etc) , spring collet (ER collet, SK high-speed collet , drawbar type collet) ; pull studs , nuts etc .

President Hong Li, On behalf of whole Dezhou PuYiO Co., Ltd , sincerely hopes to establish close business relations with domestic and foreign traders to develop the mutual economic cooperation jointly and promote friendship.

目录 | DIRECTORY

弹性筒夹刀柄 COLLET CHUCK ADAPTER BTNO.-ER □ -L	1-2
高速刀柄 COLLET CHUCK ADAPTER BTNO.-GSK □ -L1.....	3-4
后拉式刀柄 BACK PULL COLLET CHUCK	5-6
后拉式延长杆 BACK PULL EXTENSION ADAPTOR	7
侧固式小径刀柄	8
面铣刀柄 FACE MILLING ADAPTER BTNO.-FMB □ -L1.....	9-10
侧固式刀柄 SIDE LOCK END MILL ADAPTER BTNO.-SLA □ -L1.....	11
莫氏锥刀柄 (扁尾型) CNC SLEEVE (WITH TANG) BTNO.-MTA NO-L1.....	12
莫氏锥刀柄 (后拉式) CNC SLEEVE (DRAW TYPE) BTNO.-MTB NO-L1	13
直接式钻夹头刀柄 APU DRILL CHUCK ADAPTER BTNO.-APU □ -L1.....	14
精镗刀柄 DCK MICRO BORING BAR BTNO.-CK □ -L1.....	15-16
强力刀柄 CMILLING CHUCK BTNO.-C. NO-L1.....	17
伸缩攻牙器 QUICK CHANGE TENSION & COMPRESSION TAPER HOLDER BT.NO-TER.NO-L1 ...	18
热缩刀柄 SHRINK CHUCK BTNO.-SF NO.-L.....	19-20
锁牙式刀柄 SHRINK CHUCK BTNO.-M-L1.....	21
弹性筒夹刀柄 COLLET CHUCK ADAPTER SKNO.-ER □ -L.....	22-23
面铣刀柄 FACE MILLING ADAPTER SK NO.-FMB □ -L1	24-25
侧固式刀柄 SK SIDE LOCK END MILL ADAPTER SKNO.-SLN □ -L1.....	26
莫氏锥刀柄 (扁尾型) CNC SLEEV(WITH TANG) SK.NO-MTA. NO-L1	27
直接式钻夹头刀柄 APU DRILL CHUCK ADAPTER SK.NO.-APU □ -L1.....	28
强力刀柄 CMILLING CHUCK	29
弹性筒夹刀柄 COLET CHUCK ADAPTER CAT NO.-ER □ -L1.....	30
面铣刀柄 FACE MILLING ADAPTER CATNO.-FMA □ -L1.....	31
侧固式刀柄 SIDE LOCK END MILL ADAPTER CATNO.-SLN □ -L1	32
莫氏锥刀柄 (扁尾型) CNC SLEEVE (WITH TANG) CAT.NO-MTA □ -L1	33
直接式钻夹头刀柄 APU DRILL CHUCK ADAPTER CAT.NO.-APU □ -L1	34
ER 弹性筒夹刀柄 ER COLLET HOLDER HSK. NO - ER □ -L	35
GER 弹性筒夹刀柄 GER COLLET HOLDER HSK. NO - GER □ -L	36
GSK 弹性筒夹刀柄 GSK COLLET HOLDER HSK. NO - GSK □ -L.....	37
FMA 面铣刀柄 FMA FACE MILL CUTTER HOLDER HSK. NO - FMA □ -L.....	38
FMB 面铣刀柄 FMB FACE MILL CUTTER HOLDER HSK. NO - FMB □ -L.....	39
MTA 莫氏锥刀柄 (扁尾型) MTA MORSE TAPER HOLDER HSK. NO - MTA □ -L.....	40
APU 钻夹头刀柄 APU DRILL CHUCK HOLDER HSK. NO - APU □ -L.....	40
EM 锁牙刀柄 EM SMALL MILLING HEAD HOLDER HSK. NO - EM □ -L.....	41
SL 侧固式铣刀柄 SL SIDE LOCK HOLDER HSK. NO - SL □ -L.....	42
SF 热缩刀柄 SF SHRINK FIT HOLDER HSK. NO - SF □ -L.....	43
ER 筒夹 ER COLLET	44
SK 筒夹 SK COLLET	45
DC 筒夹 COLLET	46
直柄筒夹 STRAIGHT SHANK COLLET	46
ER 螺帽 ER NUT	47
拉钉系列 RETENTION KNOB.....	48-49
数控刀柄标准 MAS 403 BT	50
数控刀柄标准 DIN 69871	51
数控刀柄标准 ANSI B5.50 CAT	52
DIN 63893HSK-A.....	53
DIN 63893HSK-E.....	53
DIN 63893HSK-F.....	53

弹性筒夹刀柄 COLLET CHUCK ADAPTER

BTNO.-ER □ -L

PANDA TOOLS 攀达

特性

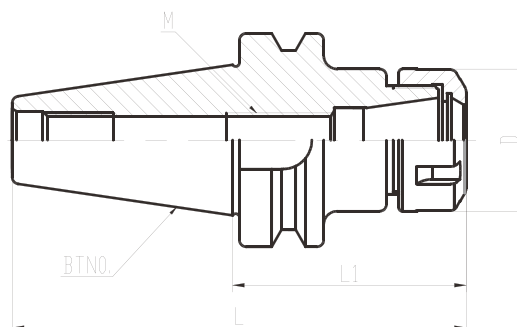
- BT NO锥柄锥度执行AT3标准。
- 内外锥同轴度0.003mm。
- 预测动平衡设计。

Features:

- BTNO taper shank executives AT3 standard.
- 0.003mm for the cone concentricity.
- Predict balancing design.



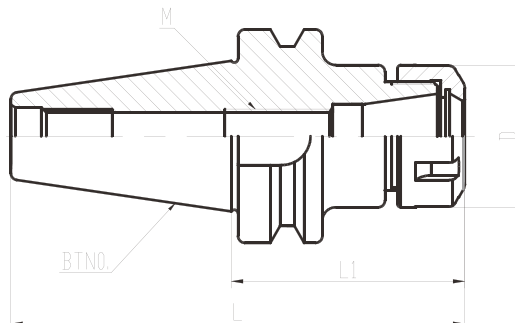
JIS B6339/DIN6499



规格 Model No.		夹持范围 Capacity	L	L1	D	M
BT30	-ER11-70	1-7	108.4	60	19	M8 × 1
	-100		148.4	100	19	
	-ER16-70	1-10	108.4	60	28	M11 × 1
	-100		148.4	100	28	
	-ER20-70	2-13	108.4	60	34	M14 × 1
	-100		148.4	100	34	
	-ER25-70	2-16	108.4	60	42	M18 × 1.5
	-100		148.4	100	42	
	-ER32-70	3-20	108.4	60	50	M22 × 1.5
-100	148.4		100	50		
BT40	-ER11-70	1-7	135.4	70	19	M8 × 1
	-100		165.4	100	19	
	-ER16-70	1-10	135.4	70	28	M11 × 1
	-100		165.4	100	28	
	-150		215.4	150	28	
	-ER20-70	2-13	135.4	70	34	M14 × 1
	-100		165.4	100	34	
	-150		215.4	150	34	
	-ER25-70	2-16	135.4	70	42	M18 × 1.5
	-100		165.4	100	42	
	-150		215.4	150	42	



JIS B6339/DIN6499



规格 Model No.		夹持范围 Capacity	L	L1	D	M
BT40	-ER32-70	3-20	135.4	70	50	M22 × 1.5
	-100		165.4	100	50	
	-150		215.4	150	50	
	-ER40-80	3-26	145.4	70	63	M28 × 1.5
	-100		165.4	100	63	
	-150		215.4	150	63	
BT50	-ER16-70	1-10	171.8	70	28	M11 × 1
	-100		201.8	100	28	
	-150		251.8	150	28	
	-ER20-70	2-13	171.8	70	34	M18 × 1.5
	-100		201.8	100	34	
	-150		251.8	150	34	
	-ER25-70	2-16	171.8	70	42	M18 × 1.5
	-100		201.8	100	42	
	-150		251.8	150	42	
	-ER32-70	3-20	171.8	70	50	M22 × 1.5
	-100		201.8	100	50	
	-150		251.8	150	50	
	-ER40-80	3-26	171.8	80	63	M28 × 1.5
	-100		201.8	100	63	
	-150		251.8	150	63	
-200	301.8		200	63		

注: 1. 可做动平衡G6.3/12000rpm, 另外加价。
2. 刀具定长结构可按客户要求定做。

1. Additional price for dynamic balance G6.3/12000rpm.
2. Order for fixed bolt, please separately.

高速刀柄 COLLET CHUCK ADAPTER BTNO.-GSK □ -L1

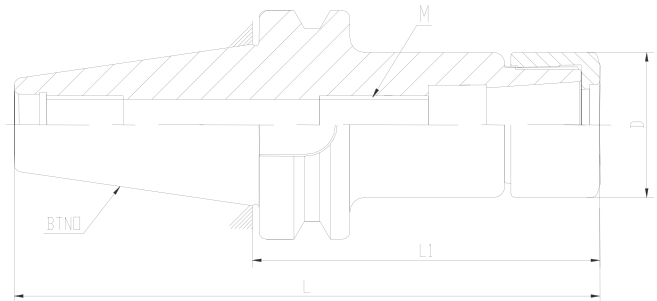
PANDA TOOLS 攀达

特性

- BTNO锥柄锥度执行AT3标准。
- 内外锥同轴度0.005mm。
- 动平衡G2.5 25000RPM。

Features:

- BTNO taper shank executives AT3 standard.
- No more than 0.005mm for the cone concentricity.
- Dynamic balance G2.5 25000rpm.

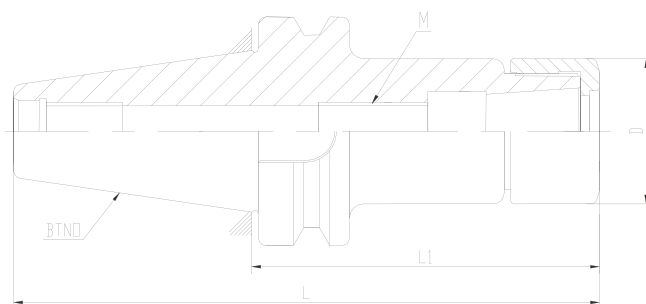


规格 Model No.		夹持范围 Capacity	L	L1	D	M
BT30	-GSK06-60	1-6	108.4	60	19.5	M8 × 1
	-90		138.4	90		
	-120		168.4	120		
	-150		198.4	150		
	-GSK10-60	1-10	108.4	60	27	M11 × 1
	-90		138.4	90		
	-GSK13-60	1-13	108.4	60	35	M14 × 1
	-90		138.4	90		
	-GSK16-60	1-16	108.4	60	40	M18 × 1.5
	-90		128.4	90		
	-120		158.4	120		
	-GSK20-60	1-20	108.4	60	48	M22 × 1.5
-90	128.4		90			
-GSK25-75	1-25	128.4	80	55	M28 × 1.5	
BT40	-GSK06-60	1-6	125.4	60	19.5	M8 × 1
	-90		155.4	90		
	-GSK10-60	1-10	125.4	60	27	M11 × 1
	-90		155.4	90		
	-120		185.4	120		
	-150		215.4	150		
	-GSK13-60	1-13	125.4	60	35	M14 × 1
	-90		155.4	90		

高速刀柄 COLLET CHUCK ADAPTER

BTNO.-GSK □ -L1

PANDA TOOLS 攀达



规格 Model No.		夹持范围 Capacity	L	L1	D	M
BT40	-GSK16-60	1-16	125.4	55	40	M18 × 1.5
	-90		155.4	80		
	-120		185.4	100		
	-150		215.4	150		
	-GSK20-60	1-20	125.4	60	48	M22 × 1.5
	-90		155.4	90		
	-120		185.4	120		
	-150		215.4	150		
	-GSK25-75	1-25	140.4	75	55	M28 × 1.5
	-90		155.4	90		
-150	215.4		150			
BT50	-GSK10-105	1-10	206.8	105	27	M11 × 1
	-135		236.8	135		
	-165		266.8	165		
	-GSK16-105	1-16	206.8	105	40	M18 × 1.5
	-135		236.8	135		
	-165		266.8	165		
	-GSK20-105	1-20	206.8	105	48	M22 × 1.5
	-135		236.8	135		
	-165		266.8	165		
	-GSK25-105	1-25	206.8	105	55	M28 × 1.5
	-135		236.8	135		
	-165		266.8	165		

注：M处刀具定长结构可按客户要求定做
Order for fixed bolt, please separately.

后拉式刀柄 BACK PULL COLLET CHUCK

特性

- 刀具偏摆 $\leq 0.005\text{mm}$,
- 整体磨削利于高速, 动平衡
- 防干涉性好, 利于深腔加工

Features:

- Runout of tools $\leq 0.005\text{mm}$
- High speed , balanced G2.5 30000RPM
- better for deep cavity machining

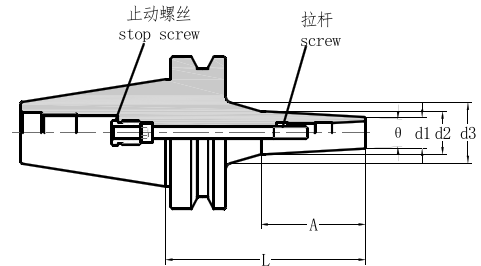


Fig. 1

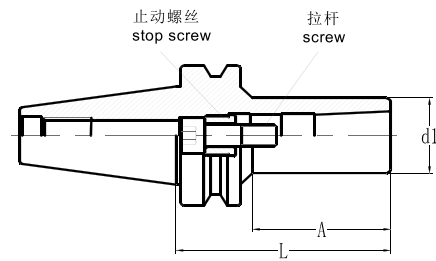


Fig. 2

型号 Model No	夹持范围 Capacity	FIG	d1	d2	d3	L	A	拉杆 Screw	扳手扭力 Torque
BT30	-DC04-60	2-4	1	10	14	60	34	M4 × 30	3Nm
	-DC04-90		1	10	16.5		63	M4 × 60	
	-DC04-120		1	10	20		93	M4 × 90	
	-DC06-60	2-6	1	14	16	21.5	28	M5 × 30	5Nm
	-DC06-90		1	14	18		29	M5 × 60	
	-DC06-120		1	14	20.5		38	M5 × 90	
	-DC06-150	1	14	31	150	125	M5 × 120	7Nm	
	-DC08-60	2-10	1	22		26	60		M6 × 30
	-DC08-90		1	22		29	90		M6 × 60
	-DC08-130		1	22	33	130	M6 × 100		
-DC12-80	3-10	2	34	34	80	55	M10 × 30	15Nm	
-DC12-120		2	32	35		120	M10 × 60		
BT40	-DC04-90	2-4	1	10	16	90	58	M4 × 70	3Nm
	-DC06-90	2-6	1	14	18	25	90	M5 × 70	5Nm
	-DC06-120		1	14	19.5	35	120	M5 × 100	
	-DC06-150		1	14	21	48	150	M5 × 130	
	-DC06-200		1	14	44	200	170	M5 × 180	

后拉式刀柄 BACK PULL COLLET CHUCK

PANDA TOOLS 攀达

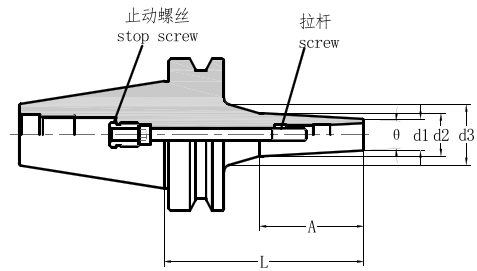


Fig. 1

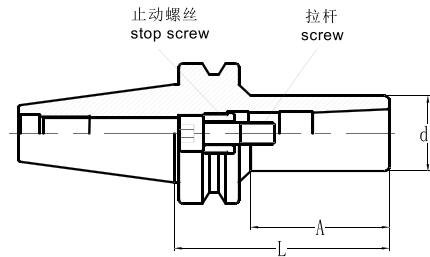


Fig. 2

型号 Model No	夹持范围 Capacity	FIG	d1	d2	d3	L	A	拉杆 Screw	扳手扭力 Torque	
BT40	-DC08-90	1	22	27.5	32	90	55	M6 × 60	7Nm	
	-DC08-120	1	22	29	44	120	71	M6 × 90		
	-DC08-150	1	12	31	55	150	90	M6 × 120		
	-DC08-200	1	22	36.5	53	200	141	M6 × 170		
BT40	-DC12-90	2	34	34	/	90	58	M10 × 30	15Nm	
	-DC12-120	2	34	43.5		120	90	M10 × 60		
	-DC12-150	2	34	46.5		150	119	M10 × 90		
	-DC12-200	2	34	56		200	171	M10 × 140		
BT50	-DC06-120	1	14	20	/	120	58	M5 × 120	5Nm	
	-DC06-150	1	14	21		49	150	67		M5 × 150
	-DC06-200	1	14	24.5	55	200	102	M5 × 150		
	-DC06-250	1	14	49	/	250	202	M5 × 200		
	-DC06-300	1	14	59		300	256	M5 × 250		
	BT50	-DC08-120	1	22	29	36	120	67	M6 × 120	7Nm
		-DC08-150	1	22	30	52	150	78	M6 × 150	
		-DC08-200	1	22	33	69	200	102	M6 × 200	
		-DC08-250	1	22	57	/	250	202	M6 × 250	
		-DC08-300	1	22	66		300	252	M6 × 300	
BT50	-DC12-120	2	34	34	/	120	78	M10 × 90	15Nm	
	-DC12-150	2	34	45		150	105	M10 × 120		
	-DC12-200	2	34	50		200	155	M10 × 170		
	-DC12-250	2	34	55		250	202	M10 × 220		
	-DC12-300	2	34	60		300	252	M10 × 270		

后拉式延长杆 BACK PULL EXTENSION ADAPTOR

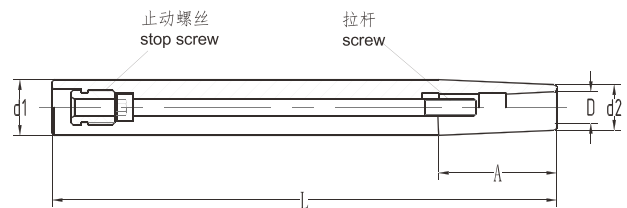
PANDA TOOLS 攀达

特性

- 刀具偏摆 $\leq 0.005\text{mm}$,
- 整体磨削利于高速, 动平衡
- 防干涉性好, 利于深腔加工

Features:

- Runout of tools $\leq 0.005\text{mm}$
- High speed, balanced G2.5 30000RPM
- Better for deep cavity machining

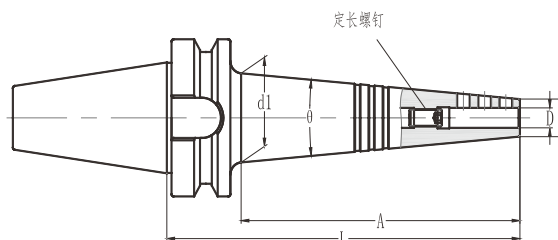


型号 Model No		夹持范围 Capacity	d1	d2	L	A	拉杆 Screw	扳手扭力 Torque
C10	-DC04-100	2-4	10	10	100	34	M4 × 70	3Nm
	-DC04-150				150	63	M4 × 120	
	-DC06-120	2-6		13	120	93	M5 × 95	5Nm
	-DC06-150				150	28	M5 × 125	
C12	-DC04-120	2-4	12	10	120	52	M4 × 70	3Nm
	-DC06-120	2-6			13	120	62	
	-DC06-150			150		125	M5 × 110	5Nm
	-DC06-200	200		36	M5 × 160			
C16	-DC06-150	2-6	16	13	150	66	M5 × 100	5Nm
	-DC06-200				200	106	M5 × 150	
	-DC06-250				250	55	M5 × 200	
	-DC08-150	2-10		20	150	58	M6 × 90	7Nm
C20	-DC06-150	2-6	20	13	150	47	M5 × 100	5Nm
	-DC06-200				200	63	M5 × 150	
	-DC08-150	2-10		20	150	79	M6 × 90	7Nm
	-DC08-200				200	170	M6 × 140	
	-DC08-250				250	55	M6 × 190	
C25	-DC06-150	2-6	25	13	150	71	M5 × 100	5Nm
	-DC08-150	2-10			20	150	90	M6 × 90
	-DC08-200			200		141	M6 × 140	
C32	-DC12-200	3-12	32	32	200	58	M10 × 120	15Nm
	-DC12-250				250	90	M10 × 170	
	-DC12-300				300	119	M10 × 220	



特性

- 刀具偏摆 $\leq 0.01\text{mm}$,
- 前端直径最小化, 防干涉性好,
- 半角 3° 或 5° , 为模具加工而设计。



型号 Model No		D	d	d1	L	A	θ
BT40	-SLD04-150	4	11	31	150	117	10°
	-SLD06-150	6	13	34	150	117	
	-SLD08-150	8	15	36	150	117	
	-SLD010-150	10	17	38	150	117	
	-SLD12-150	12	22	43	150	117	
	-SLD16-150	16	26	49	150	117	
	-SLD20-150	20	33	50	150	117	6°
	-SLD04-200	4	11	36	200	167	10°
	-SLD06-200	6	13	38	200	167	
	-SLD08-200	8	15	40	200	167	
	-SLD010-200	10	17	38	200	167	6°
	-SLD12-200	12	22	43	200	167	
-SLD16-200	16	26	49	200	167		
-SLD20-200	20	33	54	200	167		
BT50	-SLD04-200	4	12	39	200	156	10°
	-SLD06-200	6	14	41	200	156	
	-SLD08-200	8	16	43	200	156	
	-SLD010-200	10	18	45	200	156	
	-SLD12-200	12	22	49	200	156	
	-SLD16-200	16	28	55	200	156	
	-SLD20-200	20	31	58	200	156	
	-SLD04-250	4	12	46	250	206	
	-SLD06-250	6	14	48	250	206	
	-SLD08-250	8	16	50	250	206	
	-SLD010-250	10	18	52	250	206	
	-SLD12-250	12	22	56	250	206	
	-SLD16-250	16	28	62	250	206	
	-SLD20-250	20	31	65	250	206	
	-SLD04-300	4	12	53	300	256	
	-SLD06-300	6	14	55	300	256	
	-SLD08-300	8	16	57	300	256	
	-SLD010-300	10	18	59	300	256	
	-SLD12-300	12	22	63	300	256	
	-SLD16-300	16	28	69	300	256	
-SLD20-300	20	31	72	300	256		

面铣刀柄 FACE MILLING ADAPTER

BTNO.-FMB □ -L1

PANDA TOOLS 攀达

特性

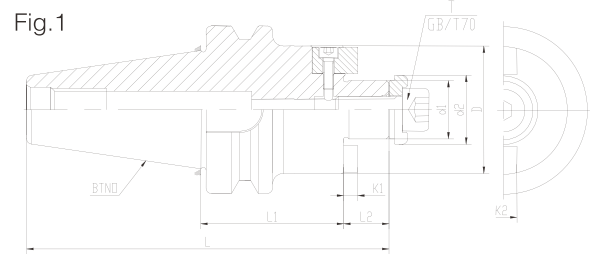
- BTNO锥柄锥度执行AT3标准。
- d1外圆执行公差h5。

Features:

- BTNO taper shank executives AT3 standard.
- Tolerance h5 for d1 excircle.



JIS B6339/DIN6357



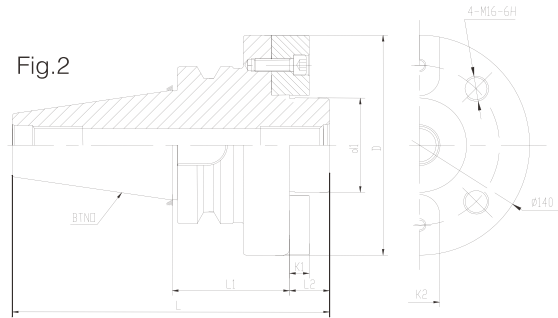
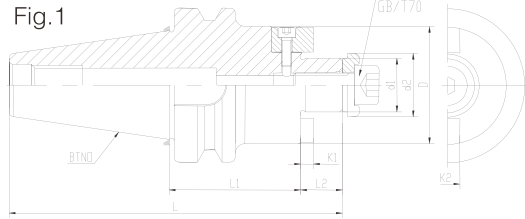
规格 Model No.		d1	d2	D	L	L1	L2	K1	K2	T	型式 Type
BT30	-FMB22-45	22	26	45	109.9	45	16.5	4.8	10	M10×30	Fig.1
	-60				124.9	60					
	-FMB27-45	27	33	54	111.9	45	18.5	5.8	12	M12×30	Fig.1
	-60				126.9	60					
	-FMB32-60	32	41	58	130.4	60	22	6.8	14	M16×35	Fig.1
BT40	-FMB22-45	22	26	48	126.9	45	16.5	4.8	10	M10×30	Fig.1
	-60				141.9	60					
	-100				181.9	100					
	-150				231.9	150					
	-FMB27-45	27	33	60	128.9	45	18.5	5.8	12	M12×30	Fig.1
	-60				143.9	60					
	-100				183.9	100					
	-150				233.9	150					
	-FMB32-60	32	41	62	147.4	60	22	6.8	14	M16×35	Fig.1
	-100				187.4	100					
	-150				237.4	150					
	-200				287.4	200					
	-FMB40-60	40	48	80	150.4	60	25	8	16	M16×35	Fig.1
	-100				190.4	100					
	-150				240.4	150					
	-200				290.4	200					

面铣刀柄 FACE MILLING ADAPTER

BTNO.-FMB □ -L1

PANDA TOOLS 攀达

JIS B6339/DIN6357



规格 Model No.		d1	d2	D	L	L1	L2	K1	K2	T	型式 Type
BT50	-FMB22-60	22	26	48	178.3	60	16.5	4.8	10	M10 × 30	Fig.1
	-100				218.3	100					
	-150				268.3	150					
	-200				318.3	200					
	-FMB27-60	27	33	60	180.3	60	18.5	5.8	12	M12 × 30	Fig.1
	-100				220.3	100					
	-150				270.3	150					
	-200				320.3	200					
	-FMB32-60	32	41	73	183.8	60	22	6.8	14	M16 × 35	Fig.1
	-100				223.8	100					
	-150				273.8	150					
	-200				323.8	200					
	-FMB40-60	40	48	80	186.8	60	25	8	16	M16 × 35	Fig.1
	-100				226.8	100					
	-150				276.8	150					
	-200				326.8	200					
-FMB60-75	60	-	140	201.8	75	25	12.5	25.4	-	Fig.2	
-100				226.8	100						

侧固式刀柄 SIDE LOCK END MILL ADAPTER

BTNO.-SLA □ -L1

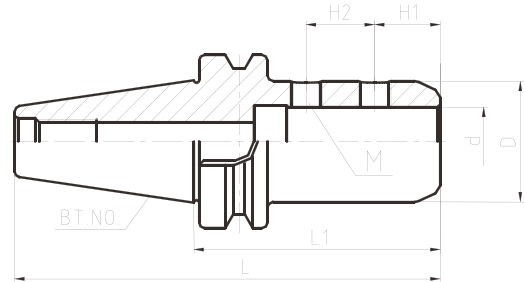
PANDA TOOLS 攀达

特性

- BTNO锥柄锥度执行AT3标准。
- 内孔d公差H5。
- 预测动平衡设计。

Features:

- BTNO taper shank executives AT3 standard.
- Tolerance h5 for d inner bore.
- Predict balancing design.



规格 Model No.		L	L1	H1	H2	M	D	d
BT30	-SLA6-60	108.4	60	12	10	M6	25	6
	-SLA8-60			14	12	M8	28	8
	-SLA10-60			M10	15	14	35	10
	-SLA12-60				20	16	40	12
	-SLA16-75	123.4	75	22	18	M12	45	16
	-SLA20-75			25	20		50	20
	-SLA25-80	128.4	80	24	25	55	25	
BT40	-SLA6-75	140.4	75	12	10	M6	25	6
	-SLA8-75			14	12	M8	28	8
	-SLA10-75			M10	15	14	35	10
	-SLA12-75				20	16	40	12
	-SLA16-75	155.4	90	22	18	M12	45	16
	-SLA20-90			25	20		50	20
	-SLA25-90	165.4	100	24	25	55	25	
	-SLA32-100	180.4	115	24	28	M16	60	32
	-SLA40-115			30	32	M20	70	40
BT50	-SLA6-75	176.8	75	12	10	M6	25	6
	-SLA8-75			14	12	M8	28	8
	-SLA10-75			15	14	M10	35	10
	-SLA12-90	20	16	40	12			
	-SLA16-90	191.8	90	22	18	M12	45	16
	-SLA20-90			25	20		50	20
	-SLA25-100	201.8	100	24	25	55	25	
	-SLA32-105	206.8	105	24	28	M16	60	32
	-SLA40-115	216.8	115	30	32	M20	70	40
	-SLA42-120	221.8	120				75	42

莫氏锥刀柄 (扁尾型) BTNO.-MTA No-L1

CNC SLEEVE (WITH TANG)

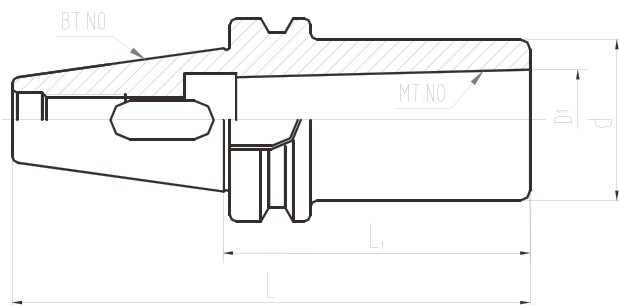
PANDA TOOLS 攀达

特性

- BTNO锥柄锥度执行AT3标准。
- 内外锥同轴度0.005mm。

Features:

- BTNO taper shank executives AT3 standard.
- No more than 0.005mm for the cone concentricity.



规格 Model No.		L	L1	D1	D
BT30	-MTA1-45	93.4	45	12.065	25
	-MTA2-60	108.4	60	17.78	32
	-MTA3-80	128.4	80	23.825	40
BT40	-MTA1-45	110.4	45	12.065	25
	-120	185.4	120		
	-MTA2-45	125.4	60	17.78	32
	-120	185.4	120		
	-MTA3-75	140.4	75	23.825	40
	-135	200.4	135		
	-MTA4-90	160.4	95	31.267	48
-165	230.4	165			
BT50	-MTA1-45	146.8	45	12.065	25
	-120	221.8	120		
	-MTA2-45	161.8	60	17.78	32
	-135	236.8	135		
	-MTA3-75	176.8	75	23.825	40
	-150	251.8	150	23.825	40
	-MTA4-90	191.8	90	31.267	48
	-180	281.8	180		
	-MTA5-105	211.8	110	44.399	63
-210	311.8	210			

莫氏锥刀柄 (后拉式) BTNO.-MTB No-L1

CNC SLEEVE (DRAW TYPE)

PANDA TOOLS 攀达

特性

- BTNO锥柄锥度执行AT3标准。
- 内外锥同轴度0.005mm。

Features:

- BTNO taper shank executives AT3 standard.
- No more than 0.005mm for the cone concentricity.

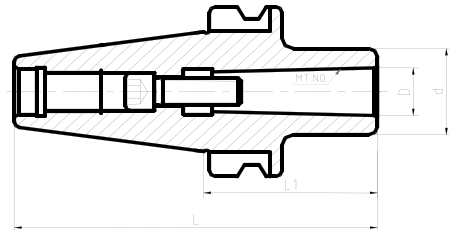


Fig.1

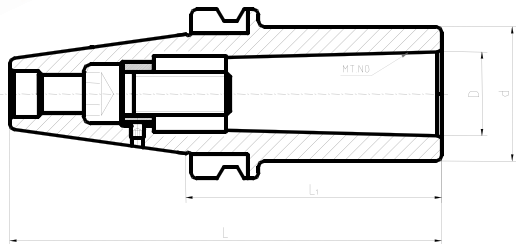


Fig.2

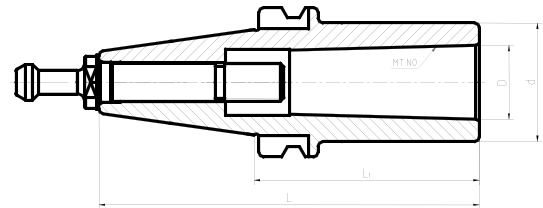


Fig.3

规格 Model No.		L	L1	D	d	Type
BT30	-MTB1-45	93.4	45	12.065	25	Fig1
	-MTB2-60	108.4	60	17.78	32	Fig2
	-MTB3-80	128.4	80	23.825	40	Fig2
BT40	-MTB1-45	110.4	45	12.065	25	Fig1
	-MTB2-50	115.4	50	17.78	32	Fig1
	-MTB3-75	140.4	75	23.825	40	Fig1,3
	-MTB4-90	155.4	90	31.267	48	Fig3
	-95	160.4	95	31.267	48	Fig2
BT50	-MTB1-45	146.8	45	12.065	25	Fig1
	-MTB2-45	146.8	45	17.78	32	Fig1
	-MTB3-60	161.8	75	23.825	40	Fig1
	-MTB4-75	191.8	90	31.267	48	Fig1
	-MTB5-120	221.8	120	44.399	63	Fig2

直接式钻夹头刀柄 APU DRILL CHUCK ADAPTER

BTNO.-APU □ -L1

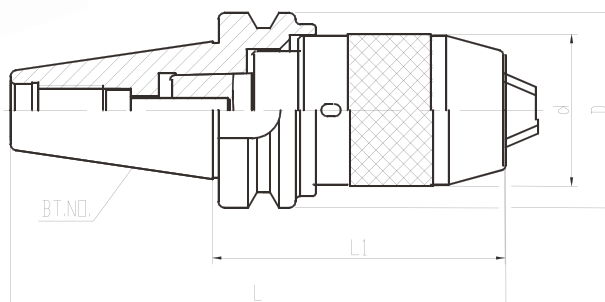
PANDA TOOLS 攀达

特性

- BTNO锥部锥柄锥度执行AT3标准。

Features:

- BTNO taper shank executives AT3 standard.



规格 Model No.		L	L1	d
BT30	-APU08-80	128.4	80	37
	-APU13-100	148.4	100	49
	-APU16-115	163.4	115	54
BT40	-APU08-85	150.4	85	37
	-APU13-105	170.4	105	49
	-APU16-120	185.4	120	54
BT50	-APU08-95	196.8	95	37
	-APU13-110	221.8	120	49
	-APU16-120	231.8	130	54
	-APU16-165	266.8	165	
	-APU16-190	291.8	190	

精镗刀柄 DCK MICRO BORING BAR

BTNO.-CK □ -L1

PANDA TOOLS 攀达

特性

- BTNO锥柄锥度执行AT3标准。
- D内孔执行公差H5。
- 整支中心出水利于出水及抗震。

Features:

- BTNO taper shank executives AT3 standard.
- Tolerance h5 for D inner bore.
- Entire center coolant for through and anti-vibration.

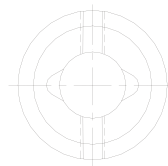


Fig.1

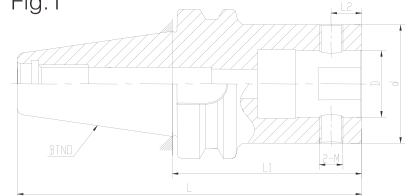
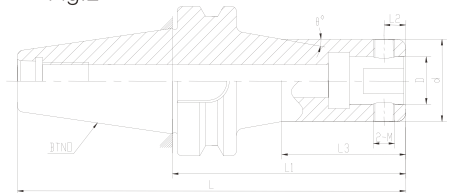
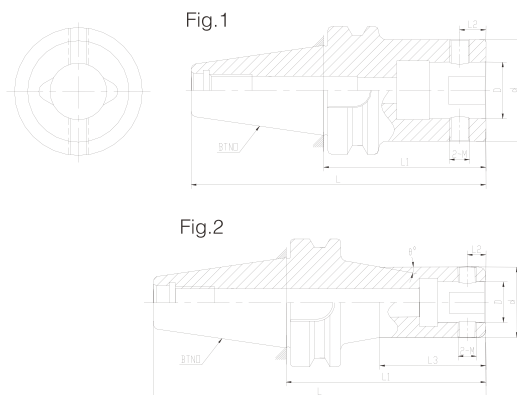


Fig.2



规格 Model No.		型式Type	D	d	L	L1	L2	L3	M	θ			
BT30	-CK1-55	Fig.1	11	19	103.4	55	5.05	/	M5 × 0.5	/			
	-70				118.4	70							
	-CK2-80		14	24	128.4	80	6.62						
	-CK3-80		18	31	128.4	80	8						
	-CK4-70		22	39	118.4	70	10						
	-CK5-70		28	50	118.4	70	13						
-CK6-60	36	64	108.4	60	16								
BT40	-CK1-100	Fig.2	11	19	165.4	100	5.05	60	M5 × 0.5	10°			
	-130				195.4	130							
	-CK2-75	Fig.1	14	24	140.4	75	6.62	/	M5 × 0.5	/			
	-100				165.4	100							
	-130	Fig.2	14	24	195.4	130	6.62	/	M5 × 0.5	10°			
	-160				125.4	160							
	-CK3-80	Fig.1	18	31	145.4	80	8	75	M6 × 0.75	/			
	-100				165.4	100							
	-135	Fig.2	18	31	200.4	135	8	/	M6 × 0.75	10°			
-165	130.4				165								
BT40	-CK4-70	Fig.1	22	39	135.4	70	10	/	M8 × 0.75	/			
	-100				165.4	100							
	-150	Fig.2			215.4	150		10			95	M8 × 0.75	10°
	-170				235.4	170							



规格 Model No.		型式Type	D	d	L	L1	L2	L3	M	θ						
BT40	-CK5-60	Fig.1	28	50	125.4	60	13	/	M10×1	/						
	-80				145.4	80										
	-100				165.4	100										
	-150				215.4	150										
	-CK6-55				36	64					120.4	55	16	/	M12×1	/
	-100										165.4	100				
-150	215.4	150														
BT50	-CK1-115	Fig.2	11	19	216.8	115	5.05	60	/	10°						
	-145				146.8	145										
	-CK2-105	Fig.1	14	24	206.8	105	6.62	/	M5×0.5	/						
	-135	Fig.2			236.8	135					75	10°				
	-165	266.8			165											
	-CK3-110	Fig.1			18	31					211.8	110	8	/	M6×0.75	/
	-140	Fig.2	241.8	140			85	10°								
	-170	271.8	170													
	-CK4-100	Fig.1	22	39	201.8	100	10	/	M8×0.75	/						
	-160	Fig.2			261.8	160					95	10°				
	-205	306.8			205											
	-CK5-90	Fig.1	28	50	191.8	90	13	/	M10×1	/						
	-165				266.8	165										
	-210	Fig.2			311.8	210					120	10°				
	-270				371.8	270										
	-CK6-85	Fig.1			36	64					186.8	85	16	/	M12×1	/
	-155										256.8	155				
	-215		316.8	215												
-250	351.8		250													
-300	Fig.2		401.8	300			160	10°								
-350		451.8	350													

强力刀柄 CMILLING CHUCK BTNo-C. No-L1

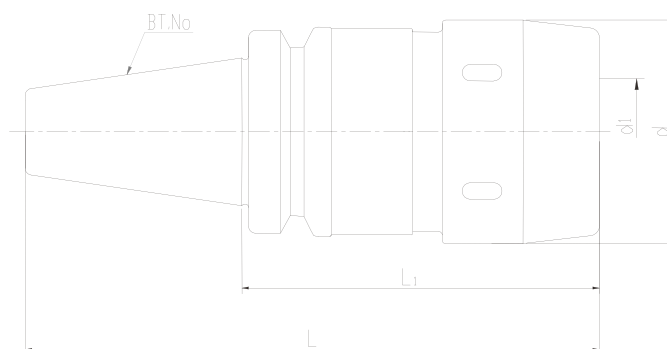
PANDA TOOLS 攀达

特性

- BTNO锥柄锥度执行AT3标准。

Features:

- BTNO taper shank executives AT3 standard

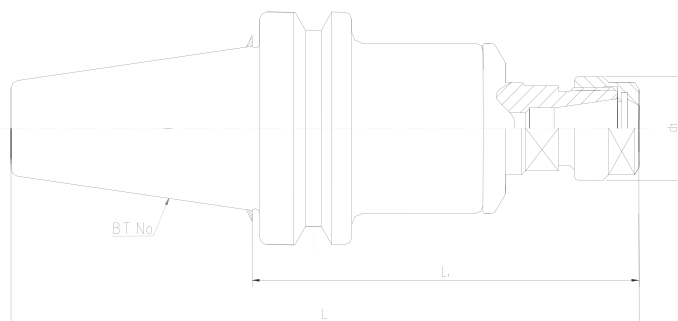


规格 MODEL NO.		L	L1	d	d1
BT40	-C25-105	164.4	105	58	25
	-C32-105	164.4	105	68	32
BT50	-C25-105	200.8	105	58	25
	-C32-105	200.8	105	68	32
	-C42-105	200.8	105	84	42

伸缩攻牙器 QUICK CHANGE TENSION & COMPRESSION TAPER HOLDER

BT.No-TER.No-L1

PANDA TOOLS 攀达



规格 Model No.	L	L1	d1	攻丝范围 Capacity	使用筒夹 Collet
BT30-TER16-75	123.4	75	28	M3-M10	ER16
BT30-TER25-90	138.4	90	34	M3-M10	ER20
BT40-TER16-120	185.4	120	28	M3-M10	ER16
BT40-TER25-100	165.4	100	34	M3-M17	ER20
BT40-TER32-120	185.4	120	50	M3-M20	ER32
BT50-TER16-120	221.4	120	28	M3-M10	ER16
BT50-TER25-100	201.4	100	34	M3-M17	ER20
BT50-TER32-120	221.4	120	50	M3-M20	ER32

热缩刀柄 SHRINK CHUCK

BTNo.-SF No.-L

- 刀具偏摆 $\leq 0.003\text{mm}$ ，降低刀具费用，大幅提升工件光洁度
- 耐热钢制作，超长寿命
- 深冷处理，防止变形
- 用于硬质合金刀具，柄部精度h6以上
- 刀具长度设定有两种方式：1.内置定长螺钉，2.刀具夹环，根据客户要求提供。

- Runout of tools $\leq 0.003\text{mm}$, low cost and better surface finishing
- Material : refractory steel , for long time using
- subzero treatment , no deformation
- For HSS tools , shank tolerance $> h6$
- Two different length of tools : 1.Built-in set length screw, 2.clamping ring , according to your requirement



Fig 1

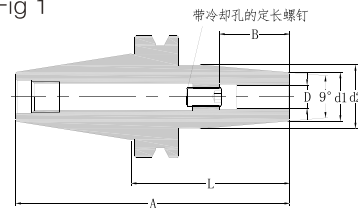
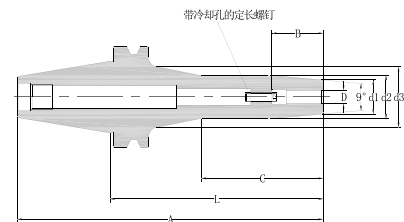


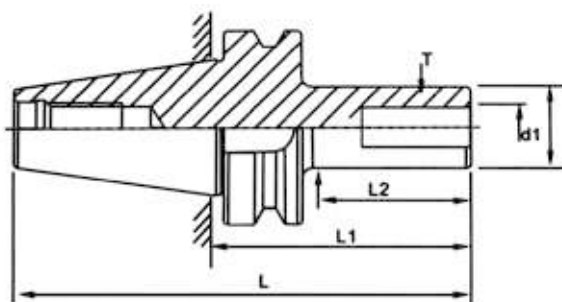
Fig 2

length screw with coolant hole



型号 Model No	FIG	D	d1	d2	d3	L	A	B	C	
BT30	-SF04-80	1	4	10	15		80	128.4	36	
	-SF06-80	1	6	19	25		80	128.4	36	
	-SF08-80	1	8	21	27		80	128.4	36	
	-SF10-80	1	10	23	32		80	128.4	40	
	-SF12-80	1	12	25	33		80	128.4	40	
	-SF14-80	1	14	27	34		80	128.4	50	
	-SF16-80	1	16	29	36		80	128.4	50	
	-SF18-80	1	18	31	40		80	138.4	50	
	-SF20-90	1	20	33	40		90	138.4	50	
	-SF04-120	2	4	10	15	33	120	168.4	36	70
	-SF06-120	2	6	19	25	35	120	168.4	36	78
	-SF08-120	2	8	21	27	35	120	168.4	36	81
	-SF10-120	1	10	23	32		120	168.4	40	
	-SF12-120	1	12	25	33		120	168.4	40	
	-SF14-120	1	14	27	34		120	168.4	50	
	-SF16-120	1	16	29	36		120	168.4	50	
	-SF18-120	1	18	31	40		120	168.4	50	
	-SF20-120	1	20	33	40		120	168.4	50	

型号 Model No	FIG	D	d1	d2	d3	L	A	B	C			
BT40	-SF04-90	1	4	10	15		90	155.4	36			
	-SF06-90	1	6	19	25		90	155.4	36			
	-SF08-90	1	8	21	27		90	155.4	36			
	-SF10-90	1	10	23	32		90	155.4	40			
	-SF12-90	1	12	25	33		90	155.4	40			
	-SF14-90	1	14	27	34		90	155.4	50			
	-SF16-90	1	16	29	36		90	155.4	50			
	-SF18-90	1	18	31	40		90	155.4	50			
	-SF20-90	1	20	33	4		90	155.4	50			
	-SF25-90	1	25	38	47		90	155.4	55			
	-SF04-120	2	4	10	15	26	120	185.4	36	60		
	-SF06-120	2	6	19	25	34	120	185.4	36	75		
	-SF08-120	2	8	21	27	33	120	185.4	36	81		
	-SF10-120	1	10	23	32		120	185.4	40			
	-SF12-120	1	12	25	33		120	185.4	40			
	-SF14-120	1	14	27	34		120	185.4	50			
	-SF16-120	1	16	29	36		120	185.4	50			
	-SF18-120	1	18	31	40		120	185.4	50			
	-SF20-120	1	20	33	40		120	185.4	50			
	-SF25-120	1	25	38	47		120	185.4	55			
	-SF04-150	2	4	10	15		30	150	215.4		36	75
	-SF06-150	2	6	19	25		38	150	215.4		36	80
	-SF08-150	2	8	21	27		38	150	215.4		36	85
	-SF10-150	2	10	23	32	41	150	215.4	40	90		
	-SF12-150	2	12	25	33	45	150	215.4	40	99		
-SF14-150	2	14	27	34	45	150	215.4	50	102			
-SF16-150	2	16	29	36	52	150	215.4	50	102			
-SF18-150	1	18	31	40		150	215.4	50				
-SF20-150	1	20	33	40		150	215.4	50				
-SF25-150	1	25	38	47		150	215.4	55				
-SF06-100	1	6	19	25			100	201.8		36		
-SF08-100	1	8	21	27	100		201.8	36				
-SF10-100	1	10	23	32	100		201.8	40				
-SF12-100	1	12	25	33	100		201.8	40				
-SF14-100	1	14	27	34	100		201.8	50				
-SF16-100	1	16	29	36	100		201.8	50				
-SF18-100	1	18	31	40	100		201.8	50				
-SF20-100	1	20	33	40	100		201.8	50				
SF25-100	1	25	38	47	100		201.8	55				
-SF06-150	2	6	19	25	38		150	251.8	36	75		
-SF08-150	2	8	21	27	43	150	251.8	36	81			
-SF10-150	2	10	23	32	43	150	251.8	40	90			
-SF12-150	2	12	25	33	41	150	251.8	40	96			
-SF14-150	2	14	27	34	40	150	251.8	50	102			
-SF16-150	1	16	29	36		150	251.8	50				
-SF18-150	1	18	31	40		150	251.8	50				
-SF20-150	1	20	33	40		150	251.8	50				
SF25-150	1	25	38	47		150	251.8	55				



型号 Model No		L1	D1	T
BT40	M8-60	60	15	M8
	M8-100	100		
	M8-150	150		
	M10-60	60	19	M10
	M10-100	100		
	M10-150	150		
	M12-60	60	24	M24
	M12-100	100		
	M12-150	150		
	M16-60	60	31	M31
M16-100	100			
M16-150	150			
BT50	M10-100	100	19	M19
	M10-150	150		
	M12-75	75	24	M24
	M12-100	100		
	M12-150	150	31	M31
	M16-75	75		
	M16-100	100		
M16-150	150			

弹性筒夹刀柄 COLLET CHUCK ADAPTER

SKNO.-ER □ -L

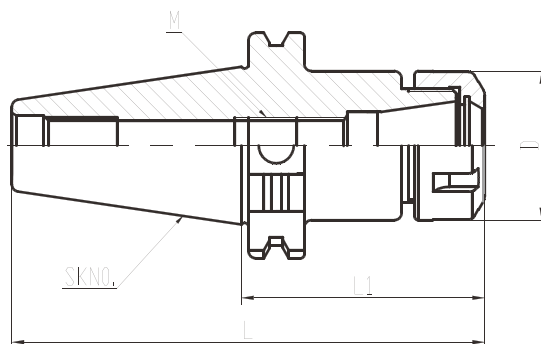
PANDA TOOLS 攀达

特性

- SKNO锥柄锥度执行AT3标准。
- 内外锥同轴度0.005mm。
- 预测动平衡设计。

Features:

- SKNO taper shank executives AT3 standard
- No more than 0.005mm for the cone concentricity
- Predict balancing design

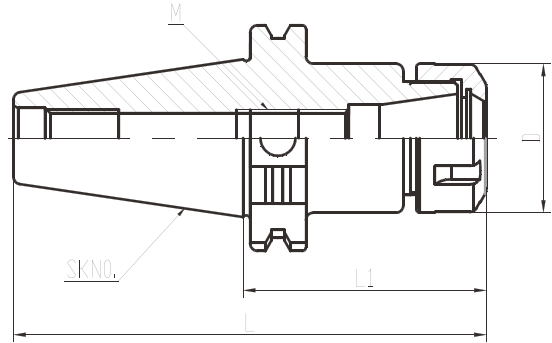


规格 Model No.		夹持范围 Capacity	L	L1	D	M
SK30	-ER11-60	0.5-7	107.8	60	19	M8 × 1
	-100		147.8	100	19	
	-ER16-60	1-10	107.8	60	28	M11 × 1
	-100		147.8	100	28	
	-ER20-60	2-13	107.8	60	34	M14 × 1
	-100		147.8	100	34	
	-ER25-60	2-16	107.8	60	42	M18 × 1.5
	-100		147.8	100	42	
	-ER32-60	3-20	107.8	60	50	M22 × 1.5
-100	147.8		100	50		
SK40	-ER11-70	0.5-7	138.4	70	19	M8 × 1
	-100		168.4	100	19	
	-ER16-70	1-10	138.4	70	28	M11 × 1
	-100		168.4	100	28	
	-150		218.4	150	28	
	-ER20-70	2-13	138.4	70	34	M14 × 1
	-100		168.4	100	34	
	-150		218.4	150	34	
	-ER25-70	2-16	138.4	70	42	M18 × 1.5
-100	168.4		100	42		
-150	218.4		150	42		

弹性筒夹刀柄 COLLET CHUCK ADAPTER

SK NO.-ER □ -L

PANDA TOOLS 攀达



规格 Model No.		夹持范围 Capacity	L	L1	D	M
SK40	-ER32-70	3-20	138.4	70	50	M22 × 1.5
	-100		168.4	100	50	
	-150		218.4	150	50	
	-ER40-80	3-26	148.4	70	63	M28 × 1.5
	-100		168.4	100	63	
	-150		218.4	150	63	
SK50	-ER16-70	1-10	171.8	70	28	M11 × 1
	-100		201.8	100	28	
	-150		251.8	150	28	
	-ER20-70	2-13	171.8	70	34	M14 × 1
	-100		201.8	100	34	
	-150		251.8	150	34	
	-ER25-70	2-16	171.8	70	42	M18 × 1.5
	-100		201.8	100	42	
	-150		251.8	150	42	
	-ER32-70	3-20	171.8	70	50	M22 × 1.5
	-100		201.8	100	50	
	-150		251.8	150	50	
	-ER40-80	3-26	171.8	80	63	M28 × 1.5
	-100		201.8	100	63	
	-150		251.8	150	63	
-200	301.8		200	63		

注：M处刀具定长结构可按客户要求定做

Order for fixed bolt, please separately.

面铣刀柄 FACE MILLING ADAPTER SK NO.-FMB □ -L1

PANDA TOOLS 攀达

特性

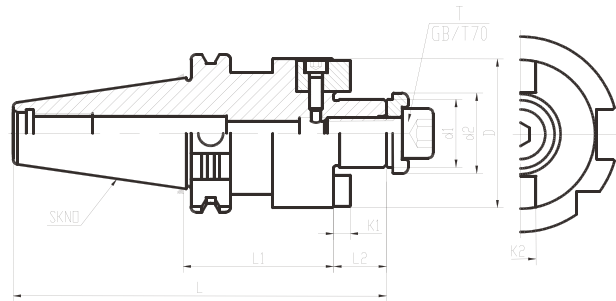
- SKNO锥柄锥度执行AT3标准。
- 配合直台公差h6。

Features:

- SKNO taper shank executives AT3 standard
- Fitting tolerance h6 for straight set.



DIN69871/DIN6357



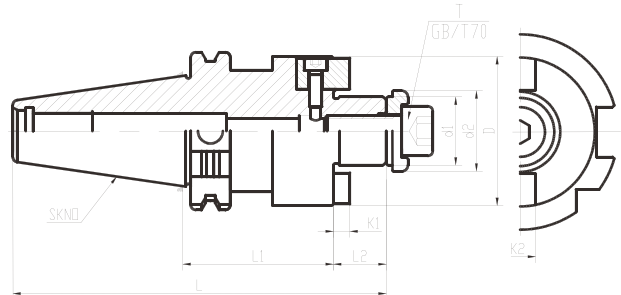
规格 Model NO.		d1	d2	D	L	L1	L2	K1	K2	T
SK30	-FMB22-45	22	26	45	109.3	45	16.5	4.8	10	M10×30
	-60				124.3	60				
	-FMB27-45	27	33	54	111.3	45	18.5	5.8	12	M12×30
	-60				126.3	60				
	-FMB32-60	32	41	58	130.3	60	22	6.8	14	M16×35
SK40	-FMB22-45	22	26	48	129.9	45	16.5	4.8	10	M10×30
	-60				144.9	60				
	-100				184.9	100				
	-150				234.9	150				
	-FMB27-45	27	33	60	131.9	45	18.5	5.8	12	M12×30
	-60				146.9	60				
	-100				186.9	100				
	-150				236.9	150				
	-200	286.9	200							
	-FMB32-60	32	41	62	150.4	60	22	6.8	14	M16×35
	-100				190.4	100				
	-150				240.4	150				
	-200				290.4	200				
	-FMB40-60	40	48	80	153.4	60	25	8	16	M16×35
-100	193.4				100					
-150	243.4				150					
-200	293.4				200					

面铣刀柄 FACE MILLING ADAPTER
SK NO.-FMB □ -L1

PANDA TOOLS 攀达



DIN69871/DIN6357



规格 Model NO.		d1	d2	D	L	L1	L2	K1	K2	T
SK50	-FMB22-60	22	26	48	178.25	60	16.5	4.8	10	M10×30
	-100				218.25	100				
	-150				268.25	150				
	-200				318.25	200				
	-FMB27-60	27	33	60	180.25	60	18.5	5.8	12	M12×30
	-100				220.25	100				
	-150				270.25	150				
	-200				320.25	200				
	-FMB32-60	32	41	73	183.75	60	22	6.8	14	M16×35
	-100				223.75	100				
	-150				273.75	150				
	-200				333.75	200				
	-FMB40-60	40	48	80	186.75	60	25	8	16	M16×35
	-100				226.75	100				
	-150				276.75	150				
	-200				326.75	200				

注：如需定中心出水或法兰盘出水请表明

Order for fixed bolt, please separately.

侧固式刀柄 SK SIDE LOCK END MILL ADAPTER

SKNO.-SLN □ -L1

PANDA TOOLS 攀达

特性

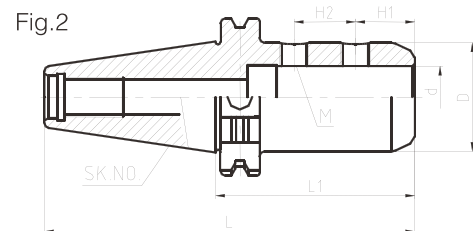
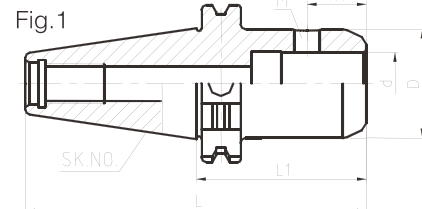
- SKNO锥柄锥度执行AT3标准。
- 内孔d公差H5。
- 预测动平衡设计。

Features:

- SKNO taper shank executives AT3 standard
- NTolerance h5 for inner bore
- Predict balancing design



DIN 69871/DIN1835



规格 Model No.		L	L1	H1	H2	M	D	d	型式 Type	
SK30	-SLN6-50	97.8	50	18		M6	25	6	Fig1	
	-SLN8-50					M8	28	8	Fig1	
	-SLN10-50					M10	35	10	Fig1	
	-SLN12-50					M12	42	12	Fig1	
	-SLN16-63	110.8	63	24		M14	48	16	Fig1	
	-SLN20-63			25		M16	52	20	Fig1	
SK40	-SLN6-50	118.4	50	18			M6	25	6	Fig1
	-SLN8-50						M8	28	8	Fig1
	-SLN10-50						M10	35	10	Fig1
	-SLN12-50						M12	42	12	Fig1
	-SLN16-63	131.4	63	24			M14	48	16	Fig1
	-SLN20-63			25			M16	52	20	Fig1
SK40	-SLN25-100	168.4	100	24	25		M18	65	25	Fig2
	-SLN32-100			24	28		M20	72	32	Fig2
SK50	-SLN6-63	164.75	63	18			M6	25	6	Fig1
	-SLN8-63						M8	28	8	Fig1
	-SLN10-63						M10	35	10	Fig1
	-SLN12-63						M12	42	12	Fig1
	-SLN16-63					M14	48	16	Fig1	
	-SLN20-63					M16	52	20	Fig1	
	-SLN25-80	181.75	80	24		25	M18	65	25	Fig2
	-SLN32-100	201.75	100	24		28	M20	72	32	Fig2
	-SLN40-100			30		32	M20	90	40	Fig2
	-SLN42-100			30		32	M20	100	42	Fig2

莫氏锥刀柄 (扁尾型) SK.No-MTA. No-L1

CNC SLEEV(WITH TANG)

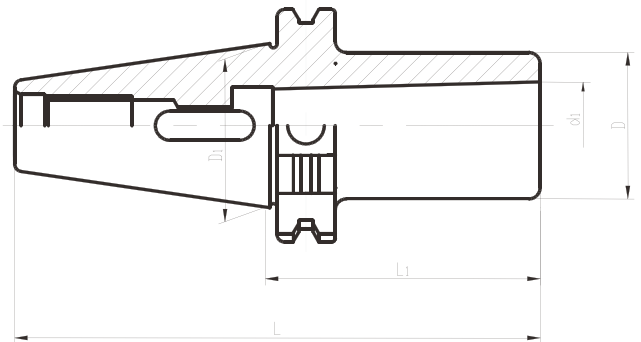
PANDA TOOLS 攀达

特性

- K.NO锥柄锥度执行AT3标准。
- 内外锥同轴度0.005mm。

Features:

- K.NO taper shank executives AT3 standard
- No more than 0.005mm for the cone concentricity



规格 MODEL NO.		L	L1	D1	d1	D
BT30	-MTA1-50	97.8	50	31.75	12.065	25
	-MTA2-60	117.8	60		17.78	32
	-MTA3-75	122.8	75		23.825	40
BT40	-MTA1-50	118.4	50	44.45	12.065	25
	-MTA2-50	118.4	50		17.78	32
	-MTA3-70	138.4	70		23.825	40
	-MTA4-95	163.4	95		31.267	48
BT50	-MTA1-45	146.75	45	69.85	12.065	25
	-MTA2-60	161.75	60		17.78	32
	-MTA3-65	166.75	65		23.825	40
	-MTA4-95	196.75	95		31.267	48
	-MTA5-105	206.75	105		44.399	63

直接式钻夹头刀柄 APU DRILL CHUCK ADAPTER SK.NO.-APU □ -L1

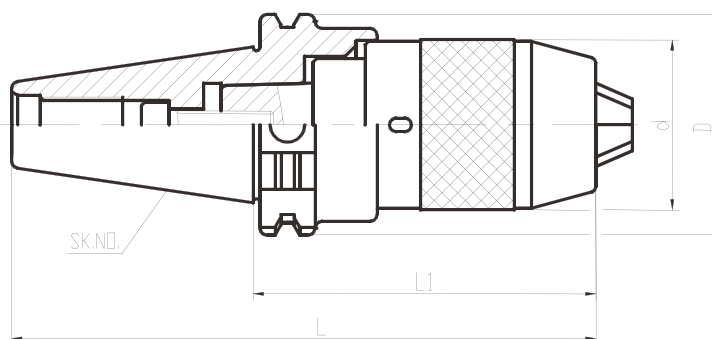
PANDA TOOLS 攀达

特性

- SKNO锥柄锥度执行AT3标准。

Features:

- SKNO taper shank executives AT3 standard



规格 Model No.		L	L1	d	D
SK30	-APU08-80	127.8	80	37	50
	-APU13-100	167.8	100	49	
	-APU16-115	182.8	115	54	
SK40	-APU08-85	153.4	85	37	63.55
	-APU13-105	173.4	105	49	
	-APU16-120	188.4	120	54	
SK50	-APU08-95	196.75	95	37	97.5
	-APU13-120	221.75	120	49	
	-APU16-130	231.75	130	54	

强力刀柄 CMILLING CHUCK SK.No-MTA. No-L1

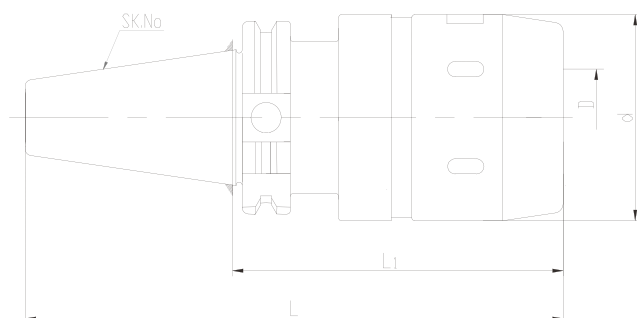
PANDA TOOLS 攀达

特性

- SK.NO锥柄锥度执行AT3标准。

Features:

- SK.NO taper shank executives AT3 standard



规格 Model No.		L	L1	d	D
SK40	-C25-105	173.4	105	58	25
	-C32-105	173.4	105	68	32
SK50	-C25-105	206.75	105	58	25
	-C32-110	211.75	110	68	32
	-C42-110	211.75	110	84	42

弹性筒夹刀柄 COLET CHUCK ADAPTER

CATNO.-ER □ -L1

PANDA TOOLS 攀达

特性

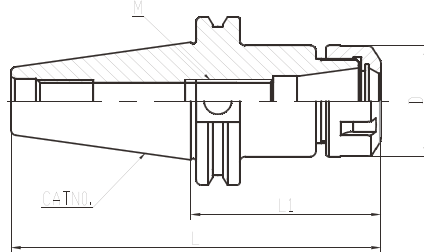
- CATNO锥柄锥度执行AT3标准。
- 内外锥同轴度0.005mm。
- 预测动平衡设计。

Features:

- CATNO taper shank executives AT3 standard
- No more than 0.005mm for the cone concentricity
- Predict balancing design



ASME B5.50/DIN6499



规格 Model No.		夹持范围 Capacity	L	L1	D	M
CAT40	-ER16-2.5"	1-10	4.375"	2.5"	28	M11 × 1
	- 4"		5.875"	4"	28	
	-6"		7.875"	6"	28	
	-ER20-2.5"	2-13	4.375"	2.5"	34	M14 × 1
	- 4"		5.875"	4"	34	
	-6"		7.875"	6"	34	
	-ER25-2.5"	2-16	4.375"	2.5"	42	M18 × 1.5
	- 4"		5.875"	4"	42	
	-6"		7.875"	6"	42	
	-ER32-2.5"	3-20	4.375"	2.5"	50	M22 × 1.5
	- 4"		5.875"	4"	50	
	-6"		7.875"	6"	50	
-ER40-2.5"	3-26	4.375"	2.5"	63	M28 × 1.5	
- 4"		5.875"	4"	63		
-6"		7.875"	6"	63		
CAT50	-ER16-4"	1-10	8"	4"	28	M11 × 1
	- 6"		10"	6"	28	
	-8"		12"	8"	28	
	-ER20-4"	2-13	8"	4"	34	M14 × 1
	-6"		10"	6"	34	
	-8"		12"	8"	34	
	-ER25-4"	2-16	8"	4"	42	M18 × 1.5
	-6"		10"	6"	42	
	-8"		12"	8"	42	
	-ER32-4"	3-20	8"	4"	50	M22 × 1.5
	-6"		10"	6"	50	
	-8"		12"	8"	50	
	-ER40-4"	3-26	8"	4"	63	M28 × 1.5
	-6"		10"	6"	63	
	-8"		12"	8"	63	
-10"	14"		10"	63		

注：1. 可做动平衡G6.3/12000rpm，另外加价
2. M处刀具定长结构可按客户要求定做

Additional price for dynamic balance G6.3/12000rpm.
Order for fixed bolt, please separately.

面铣刀柄 FACE MILLING ADAPTER CATNO.-FMA □ -L1

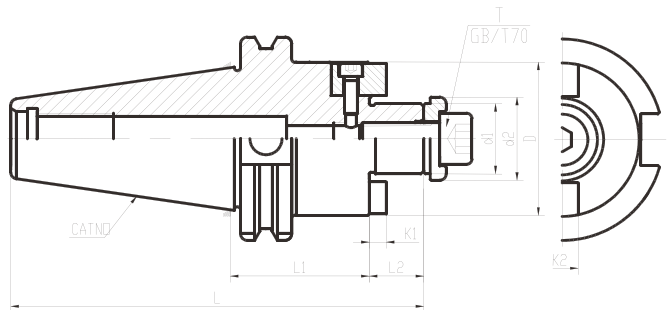
PANDA TOOLS 攀达

特性

- CATNO锥柄锥度执行AT3标准。
- 配合直台公差h6。

Features:

- CATNO taper shank executives AT3 standard
- Fitting tolerance h6 for straight set.



规格 Model NO.		d1	d2	D	L	L1	L2	K1	K2
CAT40	-FMA3/4" -1.5"	0.75	0.925	1.75	4.744	1.5	0.687	0.188	0.3125
	-FMA1" -2.06"	1	1.240	1.969	5.434	2.06		0.188	0.375
	-FMA1-1/4" -2.21"	1.25	1.614	2.362	5.584	2.21		0.25	0.50
	-FMA1-1/2" -2.21"	1.5	1.752	2.953	5.835	2.21	0.938	0.349	0.625
CAT50	-FMA3/4" -1.50"	0.75	0.925	1.766	6.187	1.50	0.687	0.188	0.3725
	-FMA1" -2.00"	1	1.24	1.969	6.687	2.00		0.188	0.50
	-FMA1-1/4" -1.5"	1.25	1.614	1.75	6.187	1.50		0.25	0.625
	-FMA1-1/2" -2.40"	1.5	1.752	2.953	7.338	2.40	0.938	0.349	0.75

侧固式刀柄 SIDE LOCK END MILL ADAPTER

CATNO.-SLN □ -L1

PANDA TOOLS 攀达

特性

- CATNO锥柄锥度执行AT3标准。
- 内孔公差H5。
- 预测动平衡设计。

Features:

- CATNO taper shank executives AT3 standardndard
- No more than 0.005mm for the cone concentricity
- Tolerance h5 for inner bore.



DIN 69871/DIN1835

Fig.1

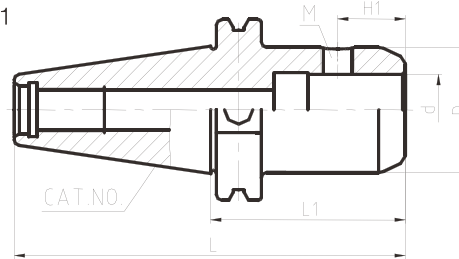
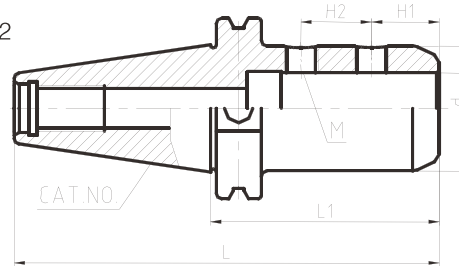


Fig.2



规格 Model No.		L	L1	d	H1	H2	M	D	型式 Type
CAT40	-SLN 1/4" -3"	5.687	3	1/4	0.63	/	1/4-28	0.984	Fig1
	-SLN 5/16" -3"			5/16	0.63		5/16-24		Fig1
	-SLN 3/8" -3"			3/8	0.781		3/8-24		1.25
	-SLN 1/2" -3"			1/2	0.875		7/16-20	1.75	Fig1
	-SLN 5/8" -3"			5/8	0.937		1/2-20		Fig1
	-SLN 3/4" -4"	6.187	3.5	3/4	1	5/8-18	Fig1		
	-SLN 7/8" -4"	6.687	4	1	1.125	0.875	5/8-10	2.047	Fig2
	-SLN 1" -4"						3/4-16	2.484	Fig2
-SLN 1-1/4" -6"	7.287	4.6	1-1/4		1	3/4-16	2.75	Fig2	
CAT50	-SLN 1/4" -4"	8	4	1/4	0.63	0.875	1/4-28	0.984	Fig2
	-SLN 5/16" -4"	8	4	5/16	0.63		5/16-24		Fig2
	-SLN 3/8" -4"			3/8	0.781	1.656	3/8-24	1.25	Fig2
	-SLN 1/2" -4"	8	4	1/2	0.875	0.875	7/16-20	1.25	
	-SLN 5/8" -4"			5/8	0.937		1/2-20	1.75	
	-SLN 3/4" -4"			3/4	1		5/8-18	Fig2	
CAT50	-SLN 7/8" -4"	8	4	7/8	1.063	0.442	5/8-18	2.047	Fig2
	-SLN 1" -4"			1	1.125	1	3/4-16	2.484	Fig2
	-SLN 1-1/4" -6"	8.6	4.6	1-1/4				2.75	Fig2
	-SLN 1-1/2" -6"			1-1/2				3.14	Fig2
	-SLN 2" -6"	10	6	2	1.188	2.438	3.938	Fig2	

莫氏锥刀柄 (扁尾型) CNC SLEEVE (WITH TANG)

CAT.No-MTA □ -L1

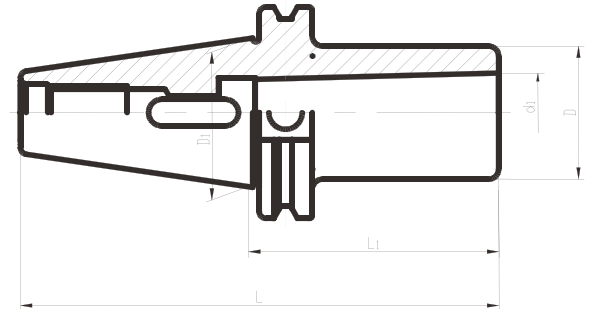
PANDA TOOLS 攀达

特性

- CAT.NO锥柄锥度执行AT3标准。
- 内外锥同轴度0.005mm。

Features:

- CAT.NO taper shank executives AT3 standard
- No more than 0.005mm for the cone concentricity



规格 MODEL NO.		L	L1	D1	d1	D
CAT40	-MTA1-45	113.25	45	44.45	12.065	25
	-MTA2-63	131.25	63		17.780	32
	-MTA3-75	143.25	75		23.825	40
	-MTA4-95	163.25	95		31.267	48
CAT50	-MTA1-45	146.6	45	69.85	12.065	25
	-MTA2-50	151.6	50		17.780	32
	-MTA3-65	166.6	65		23.825	40
	-MTA4-85	186.6	85		31.267	48
	-MTA5-105	206.6	105		44.399	63

直接式钻夹头刀柄 APU DRILL CHUCK ADAPTER

CAT.NO.-APU □ -L1

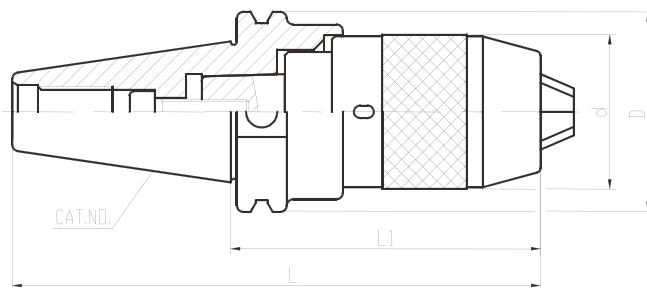
PANDA TOOLS 攀达

特性

- CSKNO锥柄锥度执行AT3标准。

Features:

- CATNO taper shank executives AT3 standard

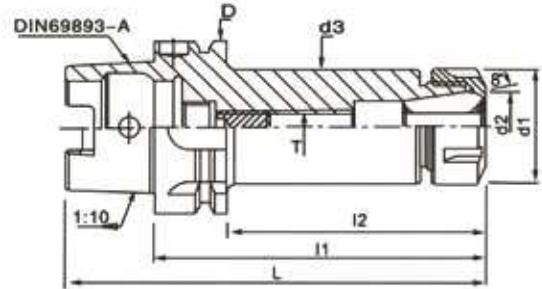


规格 MODEL NO.		L	L1	d	D
CAT40	-APU40/127" -2.76"	5.45	2.76	1.46	2.5
	-APU65/127" -3.54"	6.23	3.54	1.93	
	-APU80/127" -4.33"	7.02	4.33	2.13	
CAT50	-APU40/127" -2.95"	6.95	2.95	1.46	3.875
	-APU65/127" -3.74"	7.74	3.74	1.93	
	-APU80/127" -4.13"	8.13	4.13	2.13	

ER 弹性筒夹刀柄 ER COLLET HOLDER

HSK. NO – ER □ –L

PANDA TOOLS 攀达

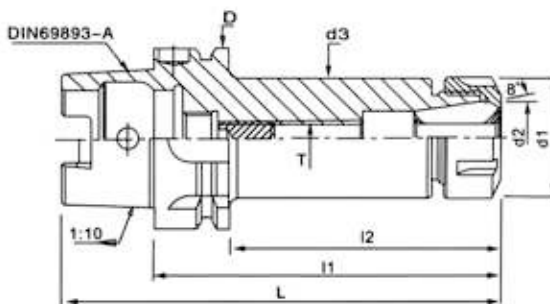


规格 Model No.		L	l1	l2	D	d1	d2	d3	T			
HSK50A	-ER16A-80	105	80	54	50	28	16	28	M10X1.5P			
	-ER16A-100	125	100	74								
	-ER16A-120	145	120	94								
	-ER20A-80	105	80	54		34	20	34		M12X1.75P		
	-ER20A-100	125	100	74								
	-ER20A-120	145	120	94								
	-ER25-80	105	80	54		42	25	42			M16X2.0P	
	-ER25-100	125	100	74								
	-ER25-135	160	135	109								
	-ER32-80	125	80	74		50	32	50				M16X2.0P
	-ER32-135	160	135	109								
-ER32-160	185	160	134									
HSK63A	-ER16A-100	132	100	74	63	28	16	28	M10X1.5P			
	-ER16A-150	182	150	124								
	-ER20A-100	132	100	74								
	-ER20A-150	182	150	124		34	20	34		M12X1.75P		
	-ER25-100	132	100	74								
	-ER25-150	182	150	124								
	-ER32-100	132	100	74		42	25	42			M16X2.0P	
	-ER32-150	182	150	124								
	-ER32-200	232	200	174								
	-ER40-100	132	100	74		50	32	50				M20X2.0P
	-ER40-150	182	150	124								
-ER40-200	232	200	174									
HSK100A	-ER16A-100	150	100	71	100	28	16	28	M10X1.5P			
	-ER16A-160	210	160	131								
	-ER20A-100	150	100	71								
	-ER20A-160	210	160	131		34	20	34		M12X1.75P		
	-ER25-100	150	100	71								
	-ER25-160	210	160	161								
	-ER32-100	150	100	71		42	25	42			M16X2.0P	
	-ER32-160	210	160	131								
	-ER40-120	170	120	91								
	-ER40-175	225	175	146		50	32	50				M20X2.0P
	-ER40-200	250	200	171								

GER 弹性筒夹刀柄 GER COLLET HOLDER

HSK. NO - GER □ -L

PANDA TOOLS 攀达

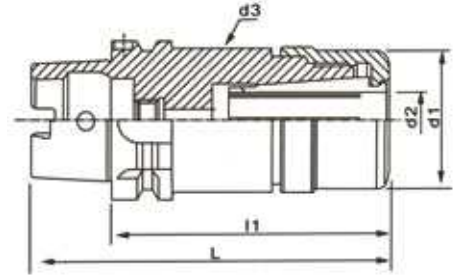


规格 Model No.		L	l1	l2	D	d1	d2	d3	T
HSK40E	-GER16M-60	86	60	40	40	27	16	28	M8X1.0P
	-GER20M-60	86	60	40		30	20	31	M10X1.5P
HSK50A	-GER16-80	105	80	54	50	28	16	28	M10X1.5P
	-GER16-100	125	100	74					
	-GER16-120	145	120	94					
	-GER20-80	105	80	54		34	20	34	M12X1.75P
	-GER20-100	125	100	74					
	-GER20-120	145	120	94		42	25	42	M16X2.0P
	-GER25-80	105	80	54					
	-GER25-100	125	100	74					
	-GER25-135	160	135	109					
	-GER32-80	125	80	74		50	32	50	M16X20P
-GER32-135	160	135	109						
-GER32-160	185	160	134						
HSK63A	-GER16-100	132	100	74	63	28	16	28	M10X1.5P
	-GER16-150	182	150	124					
	-GER20-100	132	100	74		34	20	34	M16X2.0P
	-GER20-150	182	150	124					
	-GER25-100	132	100	74					
HSK100A	-GER16-100	150	100	71	100	28	16	28	M10X1.5P
	-GER16-160	210	160	131					
	-GER20-100	150	100	71		34	20	34	M12X1.75P
	-GER20-160	210	160	131					
	-GER25-100	150	100	71		42	25	42	M16X2.0P
	-GER25-160	210	160	161					
	-GER32-100	150	100	71					
	-GER32-160	210	160	131					

GSK 弹性筒夹刀柄 GSK COLLET HOLDER

HSK. NO – GSK □ –L

PANDA TOOLS 攀达

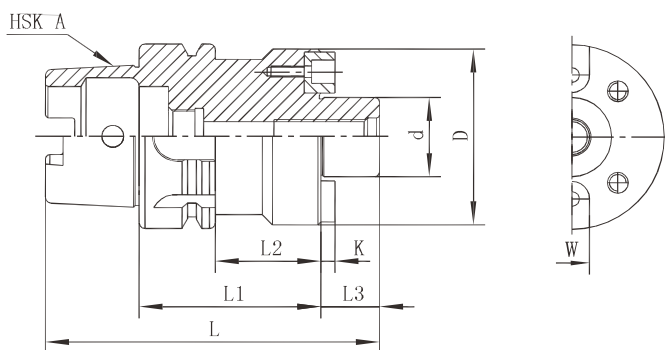


规格 Model No.		L	通用螺帽 Applied nut	夹持范围 Clamping range	d1	d2	d3
HSK40E	-GSK10-70	90	GSK10	1.75-10.0	27.5	29	29
HSK50A	-GSK 6-60	85	GSK6	0.7-6.0	19.5	20.5	20.5
	-GSK 6-90	115					32
	-GSK10-60	85	GSK10	1.75-10.0	27.5	29	29
	-GSK10-90	115					
	-GSK16-90	115					GSK16
HSK63A	-GSK 6-60	92	GSK6	0.7-6.0	19.5	20.5	20.5
	-GSK 6-90	122					32
	-GSK 6-120	152					
	-GSK10-60	92	GSK10	1.75-10.0	27.5	29	29
	-GSK10-90	122					40
	-GSK10-120	152					
	-GSK10-150	182					
	-GSK16-60	92	GSK16	2.75-16.0	40	41.9	41.9
	-GSK16-90	122					
	-GSK16-120	152					
	-GSK16-150	182					
	HSK100A	-GSK10-105	155	GSK10	1.75-10.0	27.5	29
-GSK10-135		185	32				
-GSK10-165		215					
-GSK16-155		155	GSK16	2.75-16.0	40	41.9	41.9
-GSK16-185		185					50
-GSK16-215		215					
-GSK16-245		245					52

FMA 面铣刀柄 FMA FACE MILL CUTTER HOLDER

HSK. NO – FMA □ –L

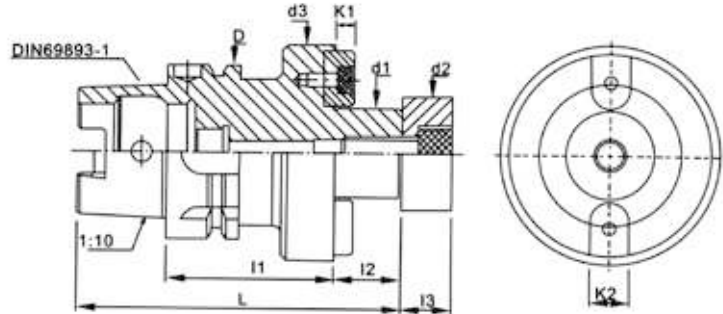
PANDA TOOLS 攀达



- 平面铣刀配合部位 (d) 轴系公差 h6
- The face milling cutter with parts (d) shaft tolerance h6

规格	Model No.	L	L1	L2	L3	d	D	K	W
HSK63A	FMA25.4-50	102	50	24	20	25.4	50	4.52	9.52
	FMA25.4-100	152	100	74	20	25.4	50	4.52	9.52
	FMA31.75-60	114	60	34	22	31.75	60	6.7	12.7
	FMA31.75-100	154	100	74	22	31.75	60	6.7	12.7
	FMA38.1-60	117	60	34	25	38.1	75	8.87	15.87
HSK100A	FMA25.4-60	130	60	31	20	25.4	50	4.52	9.52
	FMA25.4-100	170	100	71	20	25.4	50	4.52	9.52
	FMA31.75-60	132	60	31	22	31.75	60	5.8	12.7
	FMA31.75-100	172	100	71	22	31.75	60	5.8	12.7
	FMA38.1-60	135	60	31	25	38.1	80	8.3	15.87

FMB 面铣刀柄 FMB FACE MILL CUTTER HOLDER
HSK. NO – FMB □ –L

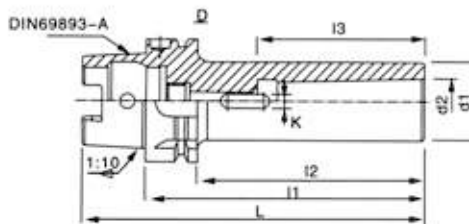


规格 Model No.		l1	l2	l3	d2	d3	K1	K2				
HSK50A	-FMB22-60	60	18	14	26	48	4.8	10				
	-FMB27-60		20	16	31.5	60	5.8	12				
HSK63A	-FMB22-100	100	18	14	26	48	4.8	10				
	-FMB22-150	150										
	-FMB22-200	200	100	20	20.5	26	60	5.8	12			
	-FMB27-100	20										
	-FMB32-100	20		31.5						78	6.8	14
	-FMB40-100	25										
HSK100A	-FMB22-100	100	18	14	26	48	4.8	10				
	-FMB22-150	150										
	-FMB22-200	200										
	-FMB27-100	100	20	16	41	60	5.8	12				
	-FMB32-100		22		48	78	6.8	14				
	-FMB40-100		25		20.5	68	89	8.3	16			

MTA 莫氏锥刀柄 (扁尾型) MTA MORSE TAPER HOLDER

HSK. NO - MTA □ -L

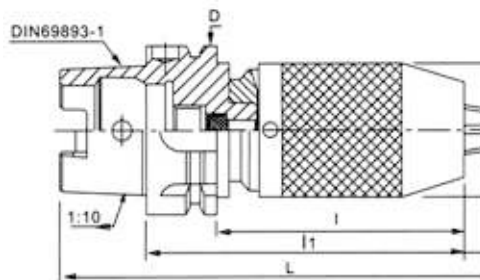
PANDA TOOLS 攀达



规格 Model No.		L	l1	l2	l3	d1	d2	K1
HSK50A	-MTA1-100	125	100	74	56	25	12.065	5.5
	-MTA2-120	145	120	94	67	32	17.780	6.5
	-MTA3-140	165	140	114	84	40	23.825	8
HSK63A	-MTA1-100	132	100	74	56	25	12.065	5.5
	-MTA2-120	152	120	94	67	32	17.780	6.5
	-MTA3-140	172	140	114	84	40	23.825	8
	-MTA4-160	192	160	134	107	48	31.267	12
HSK100A	-MTA1-110	160	110	81	56	25	12.065	5.5
	-MTA2-120	170	120	91	67	32	17.780	6.5
	-MTA3-150	200	150	121	84	40	23.825	8
	-MTA4-170	220	170	141	107	48	31.267	12
	-MTA5-200	250	200	171	133	63	44.399	16

APU 钻夹头刀柄 APU DRILL CHUCK HOLDER

HSK. NO - APU □ -L

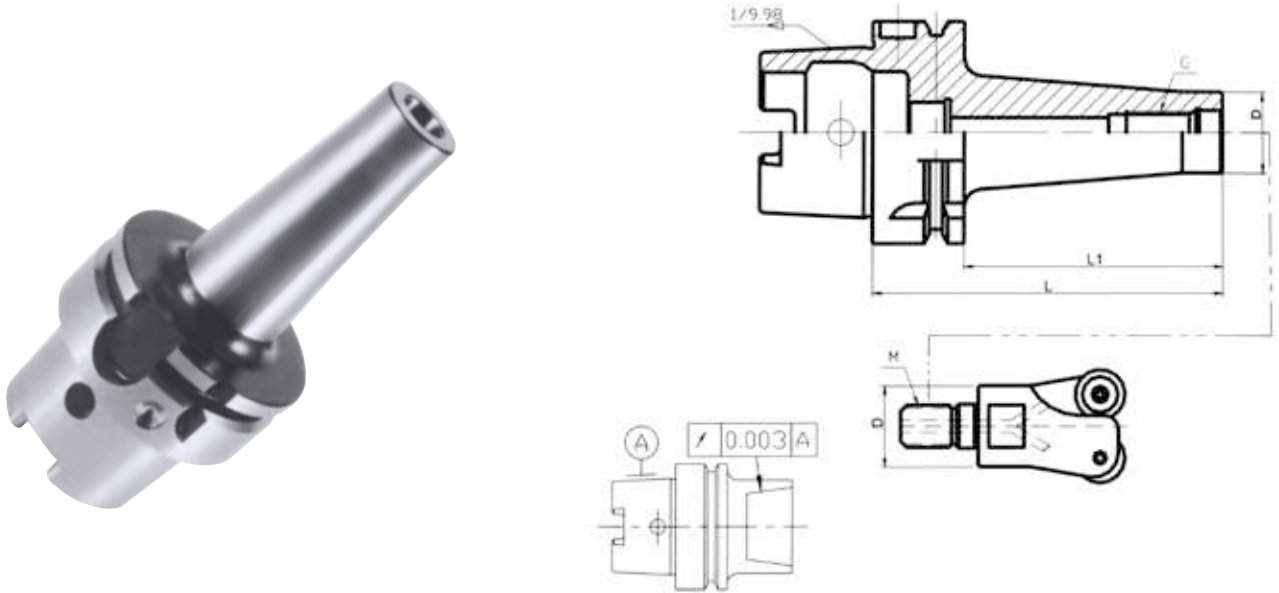


规格 Model No.		L	l1	l2	D	d1	d2
HSK50A	-APU13-110	147	84	55	50	50	5
HSK63A	-APU13-110	154			63		10
HSK100A	-APU13-120	182	91	75	100		13

EM 锁牙刀柄 EM SMALL MILLING HEAD HOLDER

HSK. NO – EM □ –L

PANDA TOOLS 攀达



规格 Model No.	L	L1	Ø D	G	重量 (kg) Weight
HSK-A63-EM08-100	100	74	13.8	M8	0.7
-150	150	124			0.8
-EM10-100	100	74	18.5	M10	0.8
-150	150	124			0.9
-EM12-100	100	74	23	M12	0.9
-150	150	124			1.1
-EM16-100	100	74	30	M16	1.0
-150	150	124			1.3
HSK-A100-EM08-100	100	71	13.8	M8	2.0
-150	150	121			2.1
-EM10-100	100	71	18.5	M10	2.1
-150	150	121			2.2
-EM12-100	100	71	23	M12	2.2
-150	150	121			2.4
-EM16-100	100	71	30	M16	2.3
-150	150	121			2.6

标准平衡等级：16000rpm/G6.3。如有特别要求，平衡等级可达：24000rpm/G2.5
Standard balance: 16000rpm/G6.3 Optional balance: 24000rpm/G2.5

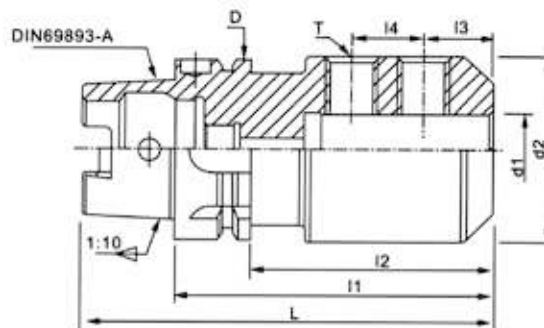
以上规格均不含小铣头及冷却水管，如有需要请另外订购。

The above model do not include small milling head and coolant pipe, please order them separately if necessary.

SL 侧固式铣刀柄 SL SIDE LOCK HOLDER

HSK. NO - SL □ -L

PANDA TOOLS 攀达

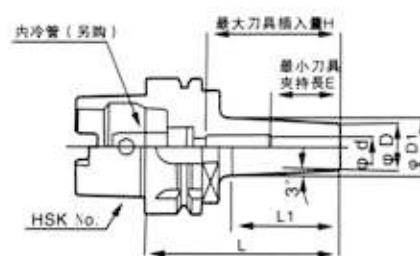
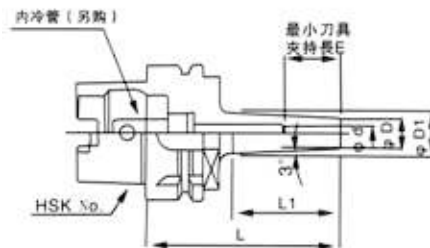


规格 Model No.		L	l1	l2	l3	D	d2	T	
HSK50A	-SLA6-65	90	65	39	18	50	25	M6X1.0P	
	-SLA8-65						28	M8X1.25P	
	-SLA10-65						35	M10X1.5P	
	-SLA12-80	105	80	54	22.5		42	M12X1.75P	
	-SLA14-80						44		
	-SLA16-80						48	M14X2.0P	
	-SLA18-80						50		
-SLA20-80						52	M16X2.0P		
HSK63A	-SLA12-100	132	100	74		24	63	42	M12X1.75P
	-SLA14-100							44	
	-SLA16-100				48			M14X2.0P	
	-SLA18-100	50							
	-SLA20-100					52		M16X3.0P	
	-SLA25-110	142	110	84	24	65		M18X2.0P	
	-SLA32-110					72		M20X2.0P	
HSK100A	-SLA12-100	150	100	71	22.5	100	42	M12X1.75P	
	-SLA14-100						44		
	-SLA16-100						48	M14X2.0P	
	-SLA18-100	50							
	-SLA20-100						52	M16X2.0P	
	-SLA25-120	170	120	91	24		65	M18X2.0P	
	-SLA32-120						72	M20X2.0P	
	-SLA40-120								30

SF 热缩刀柄 SF SHRINK FIT HOLDER

HSK. NO – SF □ –L

PANDA TOOLS 攀达



规格 Model No.		d	D	D1	L	L1	最小刀具夹持长	最大刀具夹持长	重量 (kg)
HSK63A	-SF 4-90	4	10	14.7	90	45	16	68	0.85
	-SF 6-90	6	14	19.0					
	-SF 8-90	8	18	23.0					
	-SF 10-90	10	22	27.0					
	-SF 12-90	12	24	29.0					
	-SF 16-90	16	28	33.0	165	118	38	80	1.73
	-165			40.5					
	-SF 20-90	20	34	39.5	90	52	42	65	1.11
-165	46.5			165					
HSK100A	-SF 6-105	6	14	20.0	105	57	26	-	2.47
	-165			26.5	165	117			2.67
	-SF 8-105	8	18	24.0	105	57			2.52
	-165			30.5	165	117			2.79
	-SF 10-105	10	22	28.0	105	57	32	-	2.58
	-165			34.5	165	117			2.93
	-SF 12-105	12	24	30.0	105	57	36	72	2.61
	-165			36.5	165	117			2.99
	-SF 16-105	16	28	34.0	105	57	38	80	2.66
	-165			40.5	165	117			3.11
	-SF 20-105	20	34	40.0	105	57	42	72	2.77
	-165			46.5	165	117			100

1. 请使用柄径公差h6以内的硬质合金刀具。*标记的请使用柄径公差h5以内的硬质合金刀具 2. 有内冷孔，可中心内冷。

ER 筒夹 ER COLLET

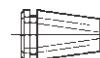
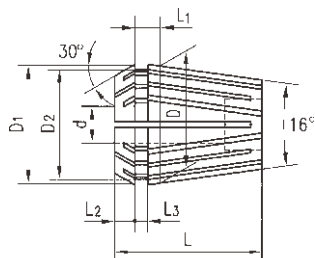
PANDA TOOLS 攀达

特性

- 选用优质弹簧钢: 65Mn
- 硬度HRC44-48

Features:

- Made of special elastic steel: 65Mn
- Hardness: HRC44-48



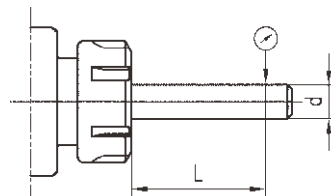
ER11-ER50

ER8

规格 Model No.	d H7	D	D1	D2	L	L1	L2	L3	弹性收缩量 Collapsible capacity
ER8	≥ 1.0 ~ 5.0	8	8.45	6.5	13.5	2.98	1.5	1.2	0.5
ER11	≥ 1.0 ~ 7.0	11	11.5	9.5	18.0	3.8	2.5	2.0	0.5
ER16	≥ 1.0 ~ 2.5	16	17	13.8	27.5	6.26	4.0	2.7	0.5
	>2.5 ~ 10.0	16	17	13.8	27.5	6.26	4.0	2.7	1.0
ER20	≥ 1.0 ~ 2.5	20	21	17.4	31.5	6.36	4.8	2.8	0.5
	>2.5 ~ 13.0	20	21	17.4	31.5	6.36	4.8	2.8	1.0
ER25	≥ 1.0 ~ 2.5	25	26	22.0	34.0	6.66	5.0	3.1	0.5
	>2.5 ~ 16.0	25	26	22.0	34.0	6.66	5.0	3.1	1.0
ER32	≥ 2.0 ~ 2.5	32	33	29.2	40.0	7.16	5.5	3.6	0.5
	>2.5 ~ 20.0	32	33	29.2	40.0	7.16	5.5	3.6	1.0
ER40	≥ 3.0 ~ 26.0	40	41	36.2	46.0	7.66	7.0	4.1	1.0
ER50	≥ 6.0 ~ 10.0	50	52	46.0	60.0	12.6	8.5	5.5	1.0
	>10.0 ~ 34.0	50	52	46.0	60.0	12.6	8.5	5.5	2.0

D	L	径向跳动 Run out tolerance	
		I	II
1.0 ~ 1.6	6	0.008	0.015
>1.6 ~ 3.0	10		
>3.0 ~ 6.0	16		
>6.0 ~ 10.0	25		
>10.0 ~ 18.0	40	0.008	0.015
>18.0 ~ 26.0	50		
>26.0 ~ 30.0	60		
>30.0 ~ 34.0	80	0.008	0.015

精度检测 Inspection of Accuracy



说明: 无特殊要求, 一般按 II 级供货, 如需 I 级, 则需特殊订货, 价格另议

If no special requirement, we would supply to you according to II grade; if you require I grade, the price would be advanced

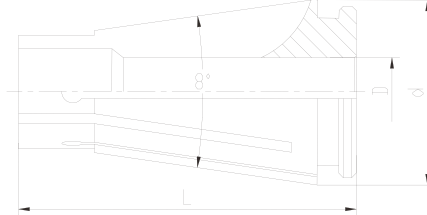
SK 筒夹 SK COLLET

特性

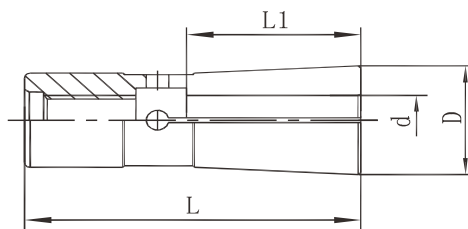
- 选用优质弹簧钢：65Mn
- 硬度HRC44-48

Features:

- Made of special elastic steel: 65Mn
- Hardness: HRC44-48

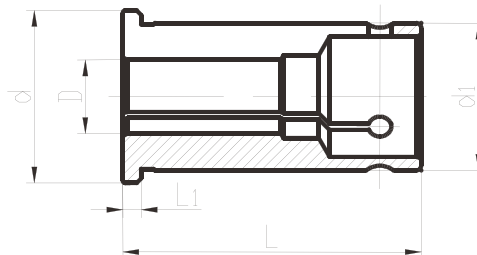
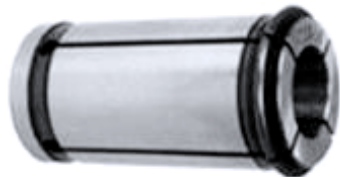


规格 Model No.	DH7	d	L	范围	型号/Model	DH7	d	L	范围
SK06	2	10.5	25.7	2-1.25	SK16	9	24.6	46	9-8.5
	2.5			2.5-2.25		9.5			9.5-9
	3			3-2.75		10			10-9.5
	3.5			3.5-3		10.5			10.5-9
	4			4-3.5		11			11-10.5
	4.5			4.5-4		11.5			11.5-11
	5			5-4.5		12			12-11.5
	5.5			5.5-5		12.5			12.5-12
SK10	6	15.6	32	6-5.5	SK25	13	35.6	58	13-12.5
	2			2-1.25		13.5			13.5-13
	2.5			2.5-2.25		14			14-13.5
	3			3-2.75		14.5			14.5-14
	3.5			3.5-3		15			15-14.5
	4			4-3.5		15.5			15.5-15
	4.5			4.5-4		16			16-15.5
	5			5-4.5		6			6-5.5
	5.5			5.5-5		8			8-7.5
	6			6-5.5		10			10-9.5
	6.5			6.5-6		12			12-11.5
	7			7-6.5		14			14-13.5
	7.5			7.5-7		16			16-15.5
	8			8-7.5		16.5			16.5-15
8.5	8.5-8	17	17-16.5						
9	9-8.5	17.5	17.5-17						
9.5	9.5-9	18	18-17.5						
10	10-9.5	18.5	18.5-18						
SK16	3	24.6	46	3-2.75	SK25	19	35.6	58	19-18.5
	3.175			3.175-2.7		19.5			19.5-19
	3.5			3.5-3		20			20-19.5
	4			4-3.5		20.5			20.5-20
	4.5			4.5-4		21			21-20.5
	5			5-4.5		21.5			21.5-21
	5.5			5.5-5		22			22-21.5
	6			6-5.5		22.5			22.5-22
	6.5			6.5-6		23			23-22.5
	7			7-6.5		23.5			23.5-23
	7.5			7.5-7		24			24-23.5
	8			8-7.5		24.5			24.5-24
8.5	8.5-7	25	25-24.5						



规格 Model No.		夹持范围 d	L	L1	D
DC6	3E	3	36	14	9.6
	3.175E	3.175	36	14	9.6
	4E	4	36	14	9.6
	5E	5	36	16	9.6
	6E	6	36	16	9.6
DC8	3E	3	45	15	15
	4E	4	45	16	15
	6E	6	45	24	15
	8E	8	45	26	15
DC12	4E	4	60	15	22
	6E	6	60	25	22
	8E	8	60	30	22
	10E	10	60	33	22
	12E	12	60	33	22

直柄筒夹
STRAIGHT SHANK COLLET



规格 Model No.	L	L1	D	d	d1
C25-	60	2.5	3,4,5,6,8,10,12,14,16,18,20	30	25
C32	65	4	3,4,5,6,8,10,12,14,16,18,20,25	36	32
C42	78	4	3,4,5,6,8,10,12,14,16,18,20,22,25,28,30,32	48	42

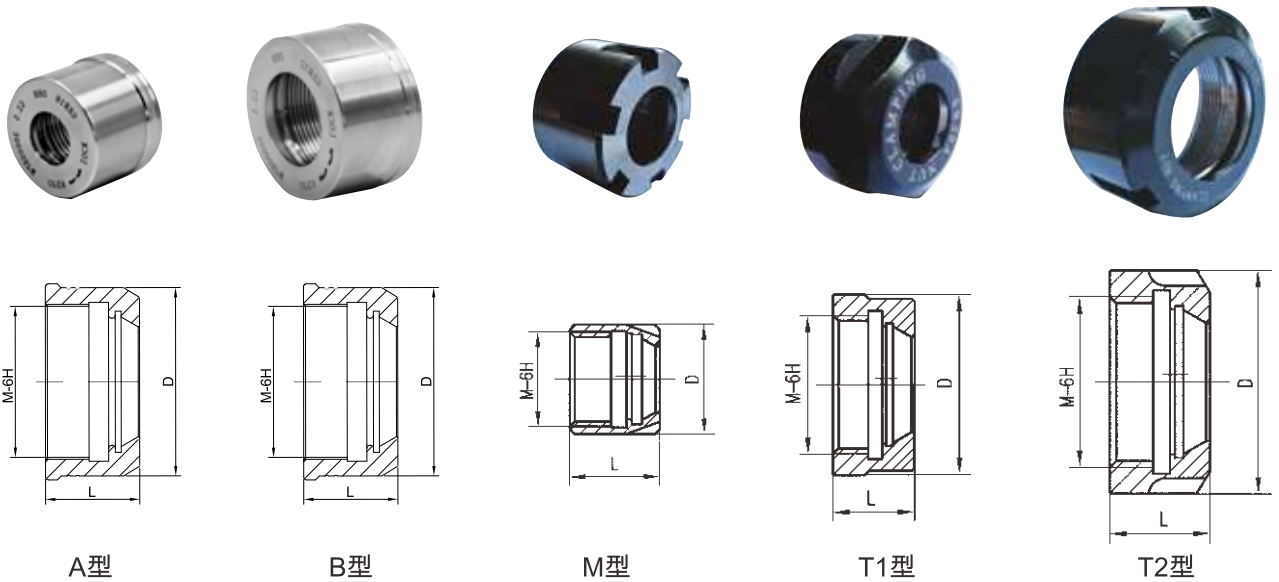
ER 螺帽 ER NUT

特性

- 预测动平衡设计。
- 螺紋与夹持锥面同軸度0.003

Features:

- Predict balancing design
- Runout: 0.003mm

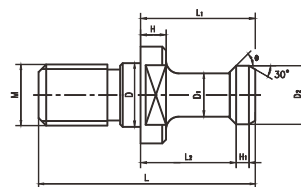


型号 Model No.	型式Type	D(mm)	L(mm)	M	重量Wt(kg)
ER16	A	27	19	M22X1.5	0.005
ER20	A	35	21	M25X1.5	0.01
ER25	A	40	22	M32X1.5	0.14
ER32	A	48	24	M40X1.5	0.20
ER8-M	M	12	12	M10×0.75	0.005
ER11-M	M	16	12	M13×0.75	0.01
ER16-M	M	22	18	M19×1	0.05
ER20-M	M	28	19	M24×1	0.05
ER25-M	M	35	20	M30×1	0.08
ER11-T1	T1	19	11.3	M14×0.75	0.005
ER16-T1	T1	28	17.5	M22×1.5	0.01
ER20-T1	T1	34	19	M25×1.5	0.05
ER25-T2	T2	42	20	M32×1.5	0.14
ER32-T2	T2	50	22.5	M40×1.5	0.20
ER40-T2	T2	63	25.5	M50×1.5	0.30
ER50-T2	T2	78	35.5	M64×2	0.50

拉钉系列 RETENTION KNOB

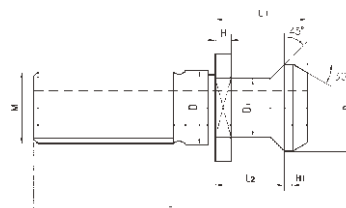
PANDA TOOLS 攀达

MAS403-1982



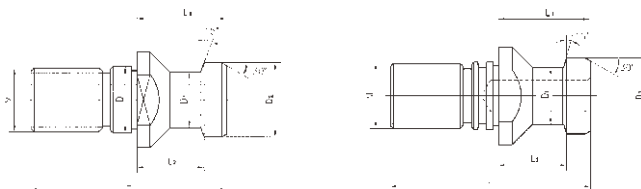
规格 Model No.	L	L1	L2	D	D1	D2	H	H1	M	θ		
BT30(θ)	43	23	18	12.5	7	11	5	2.5	M12	45°	60°	90°
BT40(θ)	60	35	28	17	10	15	6	3	M16	45°	60°	90°
BT50(θ)	85	45	35	25	17	23	10	5	M24	45°	60°	90°

MAZAK



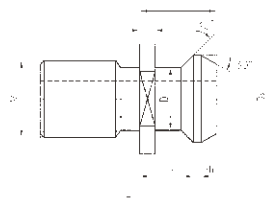
规格 Model No.	L	L1	L2	D	D1	D2	H	H1	M	θ		
MAZAK-BT40	44.10	19.10	14.02	17	12.45	18.8	3.05	1.52	M16	45°	60°	90°
MAZAK-CT40	41.25	16.25	11.17	17	12.45	18.8	3.05	1.52	M16	45°	60°	90°
MAZAK-BT50	65.20	25.20	17.7	25	20.83	28.96	5.05	2.54	M24	45°	60°	90°

DIN69872-1988



规格 Model No.	L	L1	L2	D	D1	D2	H	H1	M	θ		
DT30	44	24	19	13	9	13	9	13	M12	45°	60°	90°
DT40	54	26	20	17	14	19	14	19	M16	45°	60°	90°
DT50	74	34	25	25	21	28	21	28	M24	45°	60°	90°

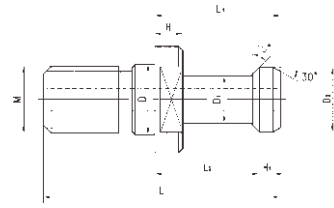
ANSI/ASME B5.50-1985



规格 Model No.	L	L1	L2	D1	D2	H	H1	M	θ			
CT30	27.94	11.68	8.13	9.78	13.21	2.54	1.01	1/2"	-13	45°	60°	90°
CT40	38.10	16.26	11.18	12.45	18.80	3.05	1.52	5/8"	-11	45°	60°	90°
CT50	58.42	25.4	17.78	20.83	28.96	5.08	2.54	1"	-8	45°	60°	90°

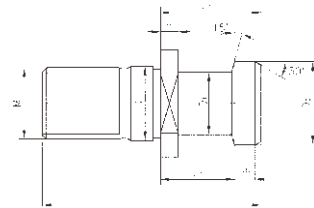
拉钉系列 RETENTION KNOB

JIS B6339-1986



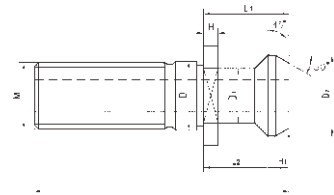
规格 Model No.	L	L1	L2	D	D1	D2	H	H1	M
JIS-30	43	23.4	18.4	12.5	8	12	5	3	M12
JIS-40	54	29	23	14	19	15	7	3	M16
JIS-50	74	34	25	25	21	28	7	5	M24

ISO/DIS7388/2-1984A



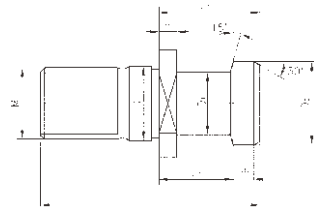
规格 Model No.	L	L1	L2	D	D1	D2	H	H1	M
ISO-30A	44	24	19	13	8	12	4	3	M12
ISO-40A	54	26	20	17	14	19	4	4	M16
ISO-50A	74	34	25	25	21	28	6	7	M24

ISO/DIS7388/2-1984B



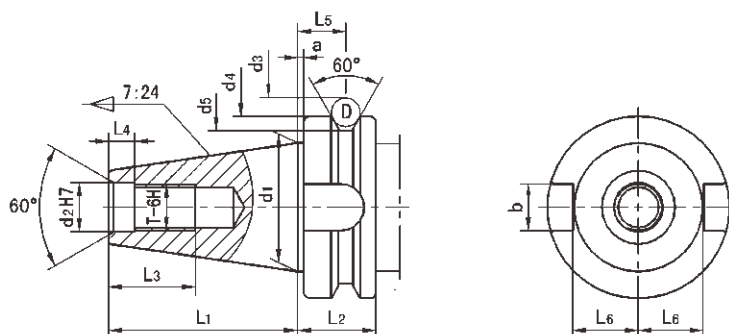
规格 Model No.	L	L1	L2	D	D1	D2	H	H1	M
ISO-30B	27	11.8	8.1	13	9.3	13.3	2.7	1.2	M12
ISO-40B	44.5	16.4	11.15	17	12.95	18.95	3.25	1.75	M16
ISO-50B	65.5	25.5	17.95	25	19.6	29.1	5.25	2.75	M24

ISO 雕铣机用拉钉

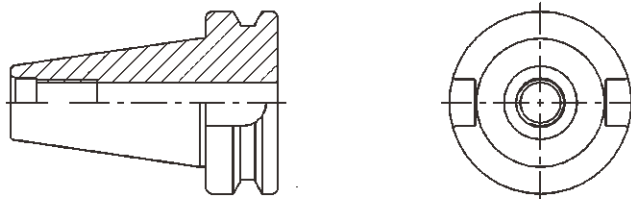


规格 Model No.	L	L1	L2	D	D1	D2	H	H1	M
ISO20	26	12	9	8.5	6	9	3	1.4	M8
ISO25	32	16	11.6	9	7	10	3.5	2	M8
ISO30	45	24	19	13	9	13	4	2.5	M12

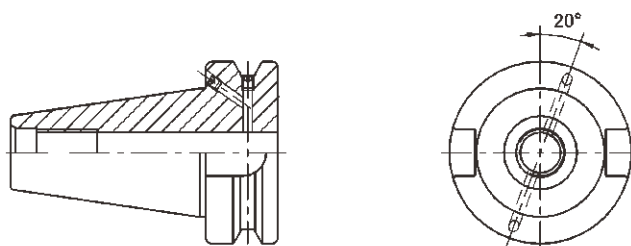
A 型：
中心孔不通 Without through hole



AD 型：
中心进水冷却
Without through hole for center coolant

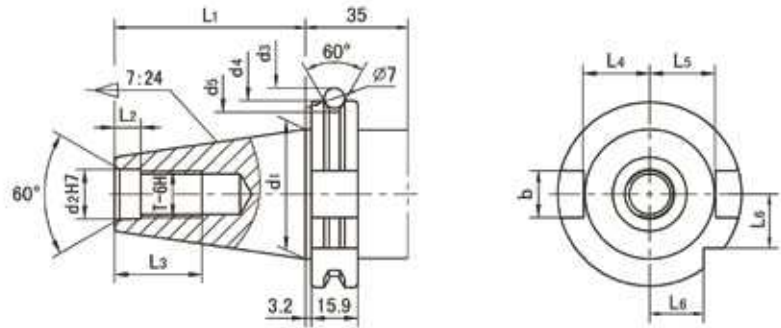


AD/B 型：
中心进水冷却与法兰盘侧面进水冷却两种形式
Form AD and form B, the former is in the center cold, the latter is in the flange plate cold, may realize central cooling and the side cools two forms the freedoms to transform



规格 Model No.	L1	L2	L3	L4	L5	L6	d1	d2	d3	d4	d5	D	a	b	T
BT30	48.4	22	24	7	13.6	16.3	31.75	12.5	56.144	46	38	8	2	16.1	M12
BT40	65.4	27	30	9	16.6	22.6	44.45	17	75.679	63	53	10	2	16.1	M16
BT50	101.8	38	45	13	23.2	35.4	69.85	25	119.019	100	85	15	3	25.7	M24

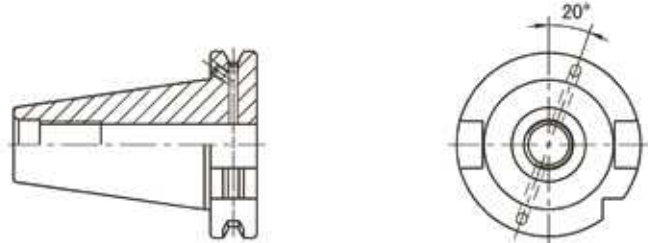
DIN69871 A 型：
中心孔不通 Without through hole



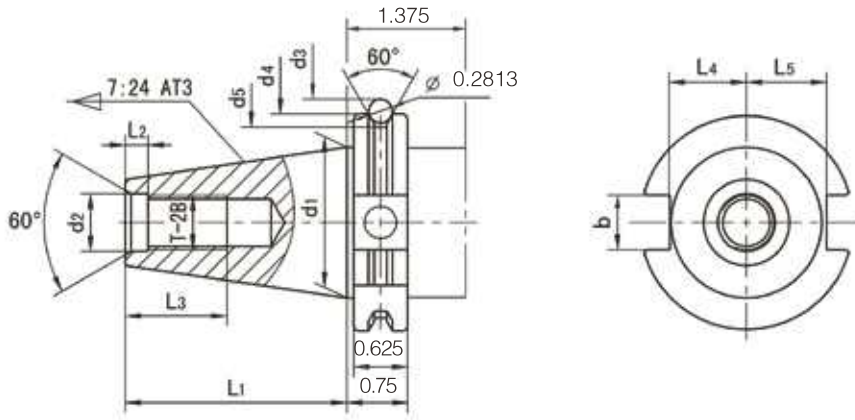
DIN69871 AD 型：
中心进水冷却
Without through hole for center coolant



DIN69871 AD/B 型：
中心进水冷却与法兰盘侧面进水冷却两种形式
DIN 69871 AD and DIN 69871 B, the former is in the center cold, the latter is in the flange plate cold, may realize central cooling and the side cools two forms the freedoms to transform



规格 Model No.	L1	L2	L3	L4	L5	L6	d1	d2	d3	d4	d5	b	T
SK30	47.8	5.5	24	16.4	19	15	31.75	13	59.3	50	44.3	16.1	M12
SK40	68.4	8.2	32	22.8	25	18.5	44.45	17	72.3	63.66	56.25	16.1	M16
SK50	101.75	11.5	47	35.5	37.7	30	69.85	25	107.25	97.5	91.25	25.7	M24



in

规格 Model No.	L1	L2	L3	L4	L5	d1	d2	d3	d4	d5	b	T
CAT30	1.875	0.188	1.00	0.64	0.735	1.25	0.516	2.176	1.812	1.531	0.645	1/2" -13
CAT40	2.687	0.188	1.12	0.89	0.985	1.75	0.641	2.863	2.500	2.219	0.645	5/8" -11
CAT50	4.000	0.250	1.75	1.39	1.485	2.75	1.031	4.238	3.875	3.594	1.020	1" -8

动平衡标准 ISO 1940

Balance Grade		G0.4	G1	G2.5	G6.3	G16	G40	G100	G250	G630	G1600	G4000
Precision Required	exw(mm/s)	0.4	1	2.5	6.3	16	40	100	250	630	1600	4000
	exw(μm*rpm)	3820	9549	23875	60165	152800	382000	954900	2387500	6016500	15280000	38200000

SETTING OF THE BALANCE SERIES IS ACCORDING TO ISO 1940 STANDARD

THE FORMULA AS FOLLOWS:

$$U = M \times e$$

$$U = \frac{G \times M}{n} \times 9549$$

$$G = \frac{n \times U}{9549 \times M}$$

G=UNBALANCE SERIES

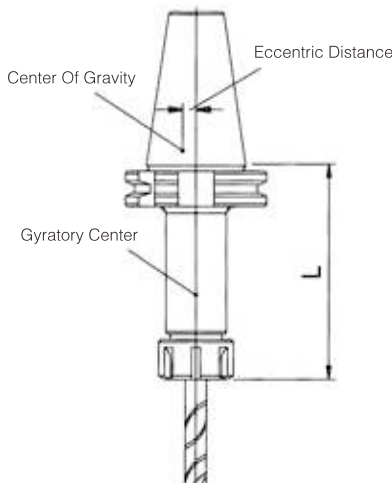
U=UNBALANCE (g-mm)

e=ECCENTRIC DISTANCE (mm)

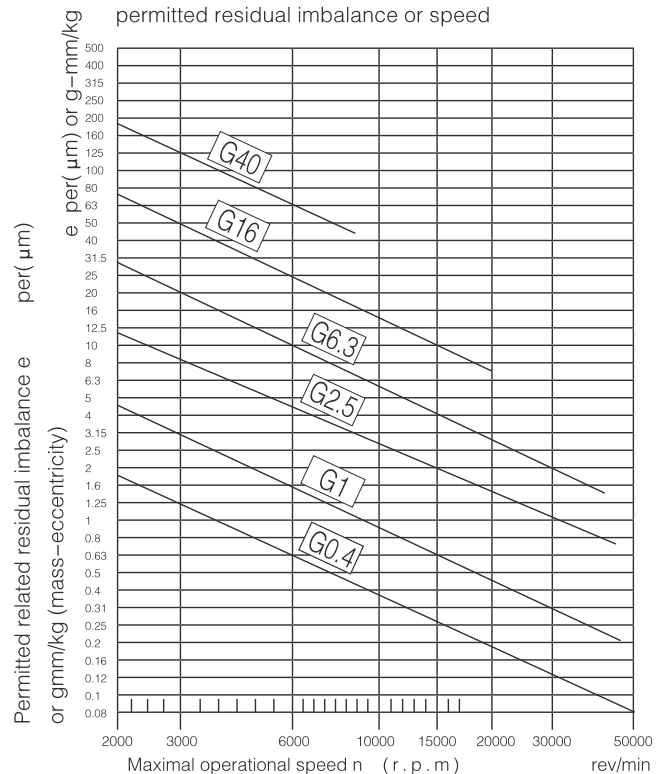
M=ROTER WEIGHT (kg)

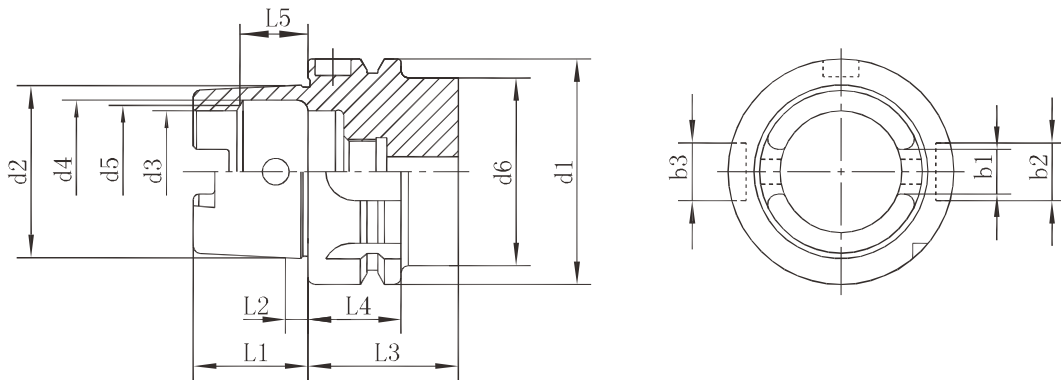
n=rpm

9549=CONSTANT



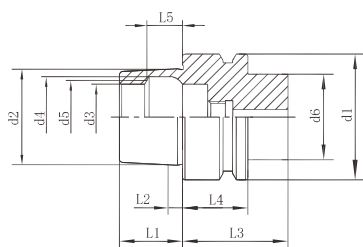
Quality levels according to ISO 1940 and permitted residual imbalance or speed





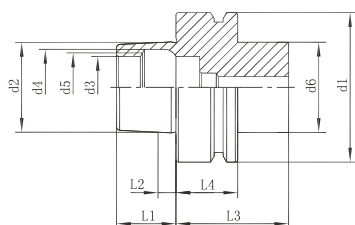
规格 Model No.	L1 0 -0.2	L2	L3 min	L4	L5 js10	d1 h10	d2	d3 H10	d4 H11	d5	d6 max	b1 ±0.04	b2 H10	b3 H10
HSK32A	16	3.2	35	20	8.92	32	24.007	17	20.5	19	26	7.05	7	9
HSK40A	20	4	35	20	11.42	40	30.007	21	25.5	23	34	8.05	9	11
HSK50A	25	5	42	26	14.12	50	38.009	26	32	29	42	10.54	12	14
HSK63A	32	6.3	42	26	18.13	63	48.01	34	40	37	53	12.54	16	18
HSK80A	40	8	42	26	22.85	80	60.012	42	50	46	68	16.04	18	20
HSK100A	50	10	45	29	28.56	100	75.013	53	63	58	88	20.02	20	22
HSK125A	63	12.5	45	29	36.27	125	95.016	67	80	73	111	25.02	25	28
HSK160A	80	16	47	31	45.98	160	120.016	85	100	92	144	30.02	32	36

DIN 63893HSK-E



规格 Model No.	L1 0 -0.2	L2	L3 min	L4	L5 js10	d1 h10	d2	d3 H10	d4 H11	d5	d6 max
HSK32E	16	3.2	35	20	8.92	32	24.007	17	20.5	19	26
HSK40E	20	4	35	20	11.42	40	30.007	21	25.5	23	34
HSK50E	25	5	42	26	14.12	50	38.009	26	32	29	42
HSK63E	32	6.3	42	26	18.13	63	48.01	34	40	37	53

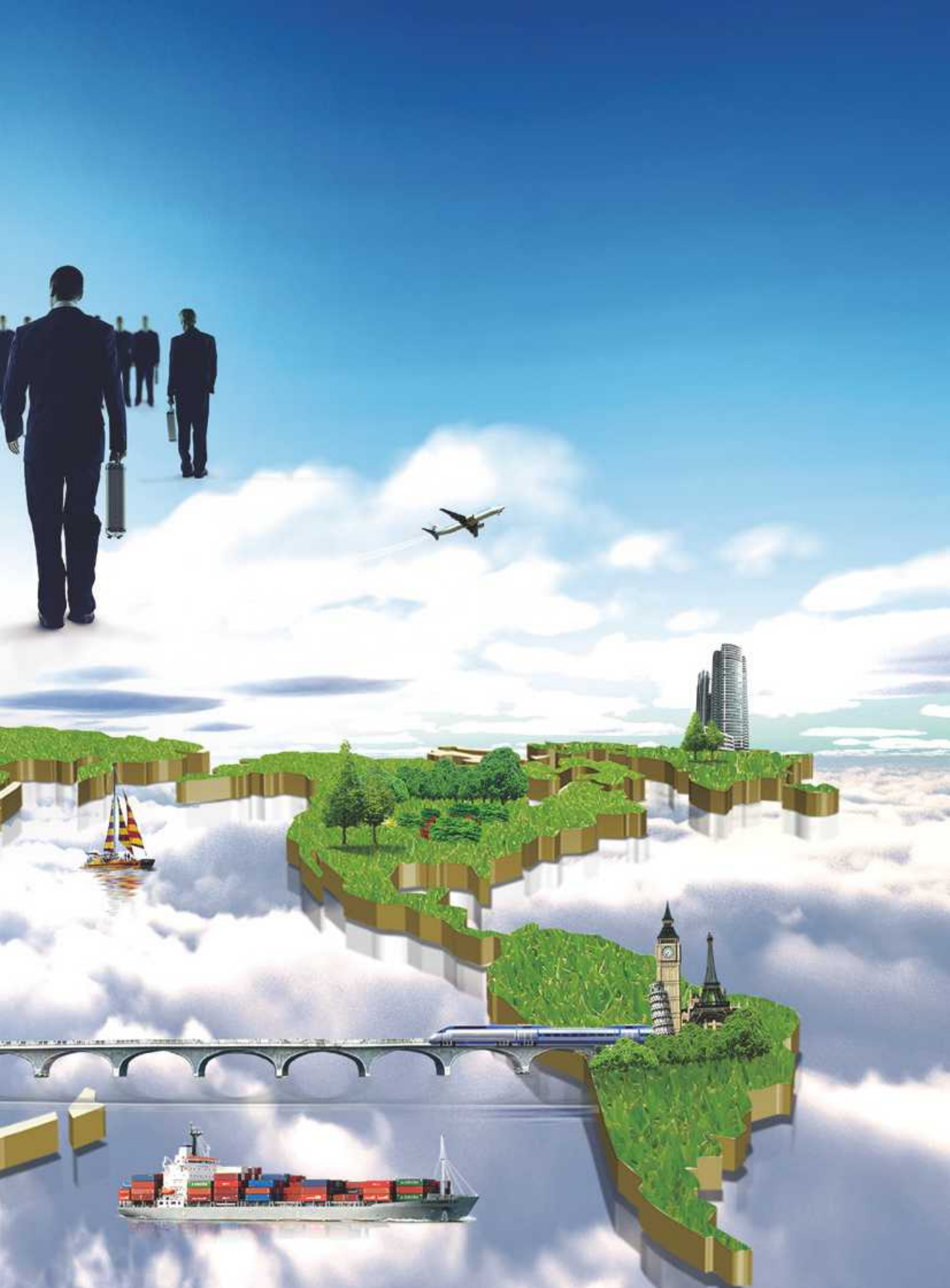
DIN 63893HSK-F



规格 Model No.	L1 0 -0.2	L2	L3 min	L4	L5 js10	d1 h10	d2	d3 H10	d4 H11	d5	d6 max
HSK50F	20	4	42	26	11.42	50	30.007	21	25.5	23	42
HSK63F	25	5	42	26	14.12	63	38.009	26	32	29	53

人企和谐共进
安全健康发展
打造行业标杆企业





Dezhou Panda Machine Tools Co., LTD
Adress: East Industrial Zone, Pingyuan County, Shandong Province
Tel: +86-0534-2217767
Mobile: +86-15688807767
Fax: +86-0534-2217767
Email: red@panda-tools.cn

样本中的产品数据和实物如有变更，本公司不便另行通知，请谅解！

如果产品图片与实物不符，以实物为准。

If any recision of the technical data and pictures in the catalogue, excuse us not giving further notice. Please refer to the sample if there is difference between the picture and sample